



# THE 28<sup>TH</sup> ANNUAL YOUTH & MID SUMMER NATIONAL ARABIAN & HALF-ARABIAN CHAMPIONSHIP HORSE SHOW

For current protocols that will be followed and expectation for of our exhibitors for AHA Nationals Championships.

Please refer to:

[www.arabianhorses.org/additional/news/covid-19-resources.html](http://www.arabianhorses.org/additional/news/covid-19-resources.html)

**QUALIFICATIONS waived for Youth and Mid Summer Nationals**

**Entries after June 23 accepted by Petition Only, subject to approval. All Post entry fees will apply.**

## UPHA

Amended qualification requirements for the 2020 UPHA Adult, Breed, Pleasure and Open Challenge Cup National Finals will now be UPHA Associate or Junior members having competed in any saddle seat equitation class beginning December 1, 2018 through November 1, 2020 are eligible to compete in the 2020 National Finals. Qualification requirements, other than membership, for the 2020 UPHA Challenge Cup Walk/Trot National Final shall be suspended.



**July 16 – 25, 2020 (Thursday – Saturday)**

**State Fair Park**

**Oklahoma City, OK**

## New for 2020

All Cattle Fees are being graciously sponsored for all exhibitors who enter Working Cow Classes.

Arabian & HA/AA JTR Reining has been changed to 18 & Under

Added classes:

A/HA/AA Western Dressage Intro & Basic JTR

Rookie & Limited JTR Reining for both Arabian & HA/AA

(JTR Open, Rookie, Limited & Intermediate will run concurrently)

No arrivals before Noon Saturday July 11

Experience AHYA Classes – are back for 2020! New for this year - the horse may cross enter into Youth Nationals Championships - only the rider may not cross enter. This is an opportunity to share the excitement of YNL with a friend or sibling.

If you are not quite ready to show at the Championship level of AHA Youth Nationals, then these are the classes for you.

Adult and Open classes added for both Arabian & HA/AA

English Pleasure, Country English Pleasure, Hunter Pleasure, Western Pleasure, Trail, Reining, Dressage, Sport Horse & Working Hunter Divisions

Hosting

The ABS Yearling classes

The Arabian 2 yr old payout classes classes

The AWPA Arabian & HA/AA Western Pleasure AAOTR classes

The Canadian National Sweepstakes designated classes are being held at the 2020 Mid Summer National Championship.



**For updates and event news follow us on Twitter @AHAArabian, Facebook at Arabian Horse Association and Instagram at arabianhorseassoc. Follow along too using #ahaYNL20**

# It Pays to Play



**ARABIAN  
BREEDERS SWEEPSTAKES**

**\$58,000 in Sweepstakes  
Prize Money available.**

*\*\*If fewer than nineteen horses are in the class, 50% rounded up will be eligible for prize money.*

## **Yearling Classes**

### **Restricted to Breeding Entries Only**

Arabian Yearling Colts/Geldings (Class 972)

Arabian Yearling Fillies (Class 971)

HA/AA Yearling Colts/Geldings (Class 974)

HA/AA Yearling Fillies (Class 973)

Champion - \$2,500

Reserve Champion - \$1,500

Remaining Top Ten - \$750

*For the following classes, Sweepstakes Prize Money is available to horses enrolled as a Breeding Entry or Original Entry.*

## **\*\*2 Year Old Classes**

Arabian 2 Year Old Colts (Class 874)

Arabian 2 Year Old Geldings (Class 975)

Arabian 2 Year Old Fillies (Class 976)

Champion - \$450

Reserve Champion - \$350

Remaining Top Ten - \$150

## **\*\*Junior Horse Classes**

Arabian English Pleasure Jr Horse (Class 91)

Arabian Country English Pleasure Jr Horse (Class 112)

Arabian Hunter Pleasure Jr Horse (Class 306)

Arabian Western Pleasure Jr Horse (Class 205)

HA/AA English Pleasure Jr Horse (Class 532)

HA/AA Country English Pleasure Jr Horse (Class 557)

HA/AA Hunter Pleasure Jr Horse (Class 749)

HA/AA Western Pleasure Jr Horse (Class 637)

Champion - \$400

Reserve Champion - \$300

Remaining Top Ten - \$100

**Join the GREEN Movement**



# Earn Your Green IN 2020!

DESIGNATED CLASS  
PAYOUTS FOR HORSES  
ENROLLED AS A  
BREEDING ENTRY OR  
ORIGINAL ENTRY.  
SWEEPSTAKES  
YEARLING CLASSES  
ARE RESTRICTED TO  
BREEDING ENTRIES  
ONLY



ARABIAN  
BREEDERS SWEEPSTAKES

[WWW.ARABIANHORSES.ORG/SWEEPS](http://WWW.ARABIANHORSES.ORG/SWEEPS)



# SPECIAL EVENTS

ACTIVITIES MAYBE CHANGED OR CANCELLED DEPENDING ON REGULATION CHANGES.  
UPDATES WILL BE MADE AS THEY BECOME AVAILABLE.

## Tuesday, July 14

Seventeenth Annual APAHA Clinics - Colby Powell Ranch Riding	2:00 PM to 3:30 PM	Performance Arena
AHYA Board Meeting	5:30 PM to 7:00 PM	Chill Box

## Wednesday, July 15

AHYA Convention	Online	
	Details will be posted at <a href="http://www.arabianhorses.org/Youth/Activities">www.arabianhorses.org/Youth/Activities</a>	
First Time Exhibitor Q&A	5:30 PM	Sales Arena
AHYA Costume Party and Ice Cream Social, sponsored by Markel Insurance	6:00 PM – 7:00 PM	Sales Arena

## Thursday, July 16

First Time Exhibitor Picture	12:30 PM	Jim Norick Arena
------------------------------	----------	------------------

## Friday, July 17

Exhibitor Welcome Dinner, sponsored by Oklahoma CVB & State Fair Park	5:00 PM – 7:00 PM	Sales Arena
--	-------------------	-------------

## Monday, July 20

Stick Horse Workshop	11:00 AM – 1:00 PM	The Chill Box
Stick Horse Contest	6:30 PM	Jim Norick Arena

## Thursday, July 23

Dog Costume Class & 15th Annual Dog Races	5:30 PM	Jim Norick Arena
---	---------	------------------

## Friday, July 24

Arabian Horse Times Photo & Ice Cream Social	6:30 PM	Jim Norick Paddock
Graduating Youth Ceremony	6:30 PM	Jim Norick Arena

# EXTRA EVENTS

**Youth Activity Room** – come hang out in the AC and play some games or watch a movie. Sponsored by Hesten Park & the Hoffman Family

**Activity Hour** – Daily fun youth activity from 11-noon in Commercial Exhibit Hall

**Find the Golden Horseshoe** – search the grounds daily for golden horseshoes, if you find one bring it to the Chill Box for a prize

**Instagram Photo Challenge** – Each day we will post a new photo challenge on Instagram. Take a photo of the challenge and tag us to win some great prizes daily!

**Photo Scavenger Hunt** – make your way around the grounds taking pictures from a list you can pick up in the Chill Box, get all the pictures and come claim your prize. Sponsored by the AHA Store

**Good Luck Ponies** - send your best friend/daughter/sister/barn friend a congratulatory horse that will be delivered to their barn! Partnering with Arabian Hunter Pleasure Association.

**Youth Exhibitor T-shirts** can be picked up at the chill box.

# Youth Nationals

# The Exhibitor's Guide to Oklahoma City

## Things To Do

**Eat Lamb Fries at Cattlemen's Steakhouse:** OKC's oldest continuously operated restaurant

**RIVERSPORT Adventures Sky Trail:** Experience the tallest adventure course, 80-foot structure features 6 levels of challenges. [www.riversportokc.org](http://www.riversportokc.org)

**National Cowboy and Western Heritage Museum:** The west begins here. America's premier institution of Western history, art, and culture. [Nationalcowboymuseum.org](http://Nationalcowboymuseum.org)

**Oklahoma City National Memorial:** Learn about the details and investigation of the Oklahoma City Bombings. [Oklahomacitynationalmemorial.org](http://Oklahomacitynationalmemorial.org)

**Take a Water Taxi Along the Bricktown Canal:** See the sites of OKC's Entertainment District and learn about the history of the city. [www.bricktownwatertaxi.com](http://www.bricktownwatertaxi.com)

**Feed the Animals at the OKC Zoo:** [www.okczoo.com](http://www.okczoo.com)



## Dining

**Blue Garten:** Open-air venue for gourmet food trucks. [www.bleugarten.com](http://www.bleugarten.com)

**The Mule:** Gourmet grilled-cheese emporium. [www.themuleokc.com](http://www.themuleokc.com)

**Big Truck Tacos:** Headquarters in Uptown serving tacos with attitude [www.Bigtrucktacos.com](http://www.Bigtrucktacos.com)

**McNellie's Public House:** Where the locals go for burgers and a beer selection. [www.mcnelliesokc.com](http://www.mcnelliesokc.com)

**Nic's Grill:** Thick burgers served crusty on the outside, juicy and tender on the inside.

**Irma's Burger Shack:** known for serving grass-fed beef.

**Empire Slice House:** Monster pizza slices, a full bar, late-night hours, patio seating and a dining room dedicated to the explanation of popular culture. [www.empireslicehouse.com](http://www.empireslicehouse.com)

**Hideaway Pizza:** State's most successful pizza chain. [www.hideawaypizza.com](http://www.hideawaypizza.com)

**Café do Brasil:** Authentic Brazilian cuisine and cocktails. [www.cafedobrasilokc.com](http://www.cafedobrasilokc.com)

**Prairie Thunder Baking Co.:** Great fresh bread, breakfast, lunch, and pastries. [www.prairiethunderbaking.com](http://www.prairiethunderbaking.com)

**Coolgreens:** Heart-smart food served quickly, offering wraps, flatbread pizza, salads, soups, and yogurt. [www.coolgreens.com](http://www.coolgreens.com)



**FEES:**

<b>Class Entry Fees</b> . . . . .	<b>\$200</b>
<b>UPHA Finals Class Fee (U)</b> . . . . .	<b>\$50</b>
<b>Cattle Fee (per horse)</b> . . . . .	<b>Sponsored</b>
Education/Evaluation Fee (Res. 9-90) (per horse) . . . . .	\$20
Failure to Close Open Show Accounts . . . . .	\$100
Late Class Post Fee . . . . .	\$100
<b>Non Competing Horse Fee</b>	
<b>Includes stall, office and per horse fee</b> . . . . .	<b>\$410</b>
<b>Office Fee (per horse)</b> . . . . .	<b>\$75</b>
<b>Obstacle Fees per class</b>	
Jump (JO) (per horse) . . . . .	\$25
Trail (TO) (per horse) . . . . .	\$25
Post Entry Fee (per horse) . . . . .	\$500
Rider/Horse Equitation Change Late Fee . . . . .	\$50
Scoring (per horse) . . . . .	\$15
Scratch Fee (if not filed in office, per class) . . . . .	\$50
Showing a Non-Qualified Horse Fee . . . . .	\$500
Trail Warm up Fee (T) (warm up for Saturday & Sunday Included in total class fee) . . . . .	\$30
<b>Warm-Ups are Horse/Rider Combination</b>	
Cow Practice (CP) (Included with class) . . . . .	\$35
Working Hunter Warm Up (W) (included with each Working Hunter class) . . . . .	\$30
<b>USEF Fees</b> (per horse, includes \$15 Drug & \$8 Admin) . . . . .	\$23
USEF Show Pass (per person) . . . . .	\$45
<b>STALL FEES:</b>	
Horse Stall (each) . . . . .	\$250
Tack Stall (each) . . . . .	\$250
Removal of Stall Panel (per Panel/Stall) . . . . .	Varies up to \$500
*Please DO NOT split cost of tack stalls on your entry form	
<b>Experience AHYA Fees</b>	
<b>Class entry fee</b> . . . . .	<b>\$35</b>
<b>Post fee (received after June 26)</b> . . . . .	<b>\$50</b>
<b>9-90 fee.</b> . . . . .	<b>\$20</b>
<b>USEF Drug fee</b> (per horse, includes \$15 Drug & \$8 Admin) . . . . .	<b>\$23</b>
<b>Office fee</b> . . . . .	<b>\$60</b>
<b>Stall fees See above</b>	
<b>OPTIONAL ITEMS:</b>	
Farrier Permit (each) . . . . .	\$500
Horse for Sale Listing (per horse) . . . . .	\$50
Show Program (each) . . . . .	\$10
Veterinarian Permit (each) . . . . .	\$1,500
VIP RV Parking for entire show . . . . .	\$950
Therapist/Chiropractor Fee . . . . .	\$500
<b>EVENT SPONSORSHIP/PARTICIPATION:</b>	
Arena Sign – Video Side (arena of your choice) . . . . .	\$600
Arena Sign – Non-Video Side . . . . .	\$500
Jacket/Buckle Sponsorship . . . . .	\$300
Class Section Sponsorship . . . . .	\$50
Patronship	
Package 1 . . . . .	\$2,500
Package 2 . . . . .	\$3,000

*Additional Event Sponsorships are available - Email NationalEvents@ArabianHorses.org or call (303) 696-4553 for more information.*

**Please note: Effective June 1, 2019, a required 3% Convenience Fee will be added by AHA to payments made by Credit Card. A Convenience Fee charge does not apply if the customer submits payment by check or money order.**

**SHOW OFFICE INFORMATION**

**Office Hours:** Phone & Fax will be available during the following  
 Monday - Wednesday, July 13 - 15 . . . . . 8:30 AM - 5 PM  
 Thursday – Saturday, July 16 - 25 . . . . . 7 AM - 1/2 hr after last class

**BARN OFFICE INFORMATION**

**Office Hours:**  
 Saturday, July 11 . . . . . 10 AM – 10 PM  
 Wednesday, - Saturday, July 16 - 25 . . . . . 7 AM – 7 PM

**FEED & BEDDING INFORMATION**

State Fair Park Feed and Bedding  
 Advanced Order form in Omnibus  
 (405) 948-6786

**FACILITY SHIPPING INFORMATION**

Packages for the horse show will only be accepted from July 13 - 25. Neither AHA nor State Fair Park is responsible for lost or stolen packages.

**Fed Ex/UPS packages can be accepted at the following address:**

State Fair Park  
 Attn: Arabian Youth Nationals  
 (Include Exhibitor/Vendor/Stable Name and cell number of recipient)  
 333 Gordon Cooper  
 Oklahoma City, OK 73107

**Please send US Postal packages to:**

State Fair Park  
 Attn: Arabian Youth & Mid Summer Nationals  
 (Include Exhibitor/Vendor/Stable Name, cell number of recipient)  
 3001 General Pershing  
 Oklahoma City, OK 73107

**SHOW COMMISSION**

Sharon Richards, Chair . . . . . California  
 Cynthia Richardson, Vice Chair . . . . . Florida  
 Diana Bein . . . . . California  
 Katharyn Hart. . . . . Oklahoma  
 Mark Himmel . . . . . Louisiana  
 Dan Stevenson. . . . . California

Show Commission can be contacted at:

Arabian Horse Association  
 10805 East Bethany Drive  
 Aurora, CO 80014  
 Phone (303) 696-4500 | Fax (303) 696-4599  
 NationalEvents@ArabianHorses.org  
 www.ArabianHorses.org

**OFFICIALS**

Show Manager . . . . . Sharon Richards  
 Director of Marketing and National Events . . . . . Kelsey Berglund  
 (720) 648-9220  
 Kelsey.Berglund@ArabianHorses.org  
 Event Coordinator . . . . . Rebecca Hankey (303) 696-4553  
 Rebecca.Hankey@ArabianHorses.org  
 Secretary . . . . . Marlene Kriegbaum (303) 696-4501  
 Marlene.Kriegbaum@ArabianHorses.org

USEF Stewards	TBA
	TBA
	Cheryl Tobey
Night Schooling Supervisor	Cindy Reid
Hunter Course Designer	TBA
Dressage Coordinator	TBA
Trail Course Designer	E.J. Allison
Announcers	Dan Savage
	Tague Johnson
	Tony Shubert
Ringmasters	Dennis Eikenberry
	Carl Malicote
	Van Jacobsen
	TBA
Barn Manager	Ben Carrillo, (505) 450-3203
Veterinarian	Equine Athlete Veterinary Services
	Dr. Brad Hill (517) 643-1091
	Dr. Ty Wallis (970) 218-4867
EMT	Equestrian Medical Service
Farrier	TBA
Photographer	Mike Ferrara, (435) 214-0443
Web Live Streaming	Arabian Horse Association
	www.arabianhorses.stream

## JUDGES

The management reserves the right to vary or add to this list. Panels and/or judge order are subject to change.

## NORICK PANEL (N)

Norick Judging panels will rotate using the following 6 judges  
 Dede Bisch (D) - Scottsdale, AZ  
 Scott Brumfield (B)- Green Castle, PA  
 Brian Ferguson (F)- Victor, NY  
 Virginia Godwin (G)- Battleboro, NC  
 Debbie Reid (R)- Belfountain, ON  
 Corky Sutton (S) -Akron, NY

## UPHA PANEL (U)

TBA

## WORKING WESTERN PANEL (W)

Bruce Bates (W1) - Wyandotte, OK  
 Mary Jane Brown (W2) - Newberg, OR  
 Ann Judge (W3) - Bennett, CO

## WORKING HUNTER (H)

Amy Causey (C) - Wylie, TX  
 Woody Dykers (D) - Alpharetta, GA  
 Phillip Long (L) - Raleigh, NC

## DRESSAGE (D)

Sandi Chohany (C) - Hampshire, IL  
 Fatima Kranz (K) - Algonquin, IL

## HALTER PANEL

Steven Lieblang (L) - Richmond, TX  
 Bruce McCrea (M) - Edmond, OK  
 Jerzy, Zbyszewski (Z) - Ocala, FL

*These judges were selected by the Judges and Stewards Selection Committee.*

## IMPORTANT DEADLINES & DATES

**YOUTH & MID SUMMER NATIONAL QUALIFICATIONS ARE WAIVED FOR 2020**

**ENTRIES RECEIVED AFTER JUNE 23 WILL BE ACCEPTED WITH A PETITION ONLY, SUBJECT TO APPROVAL. ALL POST ENTRY FEES WILL APPLY.**

Exhibitors are advised to use form of expedited, traceable mail service when sending entries in order to ensure that their entries are received. If you email your entries, please contact AHA if you do NOT get a return email acknowledge the receipt of your entry on the same or next business day.

### VIP Dates

**Entries For Youth & Mid Summer Nationals accepted as follows:**

#### New closing date in response to Covid-19

Entries Post Marked/ Electronically Dated on or prior to Tuesday, June 9 Midnight (MT)	
to be included in the show program	No penalty
<b>Additional entries will be accepted prior to Tuesday, June 23 Midnight (MT)</b>	
<b>Will NOT be in the show program.</b>	<b>No penalty</b>

**\*NEW\* Youth & Mid Summer Championship entries received after June 23 will be accepted with a Petition Only, subject to approval. Post entry fees will apply as follows:**

New horse (per horse)	\$500 Post fee
Added class for horse already entered	.\$100 Late class fee per horse

#### Experience AHA Youth Nationals entries accepted as follows: (separate entry form required)

Wednesday, June 24 Midnight	No penalty
From June 25 to July 16, 5 PM	.\$50 Post fee per horse
After Thursday July 16, 5 PM.	NO additional new horses will be accepted
Additional classes may be entered until Saturday July 18, 5 PM @ \$35.00 per class	

#### Arrival & Stalling Information

Wednesday, June 24 In-House / Electronically Dated.	Group Stabling Requests Due
<b>Saturday, July 11.</b>	<b>NO Arrivals before noon</b>
Sunday July 26, by Midnight.	Stalls must be vacated *NO EXCEPTIONS.

#	Class	Panel	Call	Class Fee
Norick Judges: Dede Bisch (D), Scott Brumfield (B), Brian Ferguson (F), Virginia Godwin (G), Debbie Reid (R), Corky Sutton (S)				
Working Western: Bruce Bates (W1) MJ Brown (W2) Ann Judge (W3)				
Dressage: Sandi Chohany (D1) Fatima Kranz (D2)				
Halter : Steven Lieblang (L), Bruce McCrea (M) Jerzy Zbyszewski (Z)				
Western Dressage: Karlan Downing (K)				
Working Hunter: Amy Causey (H1) Woody Dykers (H2) Phillip Long (H3).				
Sport Horse: Amy Causey (C) Woody Dykers (D) Fatima Kranz (K)				
Experience Classes: Mark Goff				

**MARE BREEDING / GELDING IN HAND**

2100	Arabian Mare Breeding JOTH CH	L,M,Z		\$200
2101	Arabian Mare Breeding JTH CH	L,Z,M		\$200
2	Arabian Mares Breeding 3 & Over Open CH	L,M,Z		\$200
5	Arabian Mare Breeding 3 & Over AAOTH CH	L,Z,M		\$200
15	Arabian Stallion Breeding 3 & Over Open CH	M,Z,L		\$200
18	Arabian Stallion Breeding 3 & Over AAOTH CH	M,L,Z		\$200
2102	Arabian Gelding In-Hand JOTH CH	Z,M,L		\$200
2103	Arabian Gelding In-Hand JTH CH	M,L,Z		\$200
27	Arabian Geldings In-Hand 3 & Over Open CH	L,Z,M		\$200
30	Arabian Gelding In-Hand 3 & Over AAOTH CH	Z,M,L		\$200
3113	HA/AA Mare Breeding JTH CH	L,M,Z		\$200
401	HA/AA Mares 3 & Over Open CH	L,Z,M		\$200
3111	HA/AA Mare Breeding 3 & Over AAOTH CH	L,Z,M		\$200
3114	HA/AA Gelding In-Hand JTH CH	L,M,Z		\$200
451	HA/AA Geldings In-Hand 3 & Over Open CH	Z,M,L		\$200
3112	HA/AA Gelding In-Hand 3 & Over AAOTH CH	M,Z,L		\$200
2487	Arabian Performance Halter Mares 3 & Over AATH CH	W1		\$200
2488	Arabian Performance Halter Geldings 3 & Over AATH CH	W2		\$200
2489	HA/AA Performance Halter Mares 3 & Over AATH CH	W3		\$200
2490	HA/AA Performance Halter Geldings 3 & Over AATH CH	W2		\$200

**YEARLING SWEEPSTAKES**

*971	ABS Arabian Yearling Filly CH	M,Z,L		\$200
*972	ABS Arabian Yearling Colt/Gelding CH	Z,L,M		\$200
*973	ABS HA/AA Yearling Filly CH	M,L,Z		\$200
*974	ABS HA/AA Yearling Colt/Gelding CH	Z,M,L		\$200

**Must be a breeding entry**

**YEARLING SWEEPSTAKES HORSES MAY NOT CROSS ENTER INTO THE OPEN YEARLING CLASSES**

**New classes for 2020 are shaded**

**\*Sweepstakes Allocated Payback**

**C - Cattle Fee @ \$200 per class TO - Trail Obstacle Fee @ \$25 per class T - Trail Warm up @ \$30 per class J - Jump Obstacle Fee @ \$25.00 per class**





#	Class	Panel	Call	Class Fee
<b>OPEN YEARLING</b>				
3091	Arabian Yearling Filly Open CH	M,L,Z		\$200
3110	Arabian Yearling Colt/Gelding Open CH	Z,M,L		\$200
2062	HA/AA Yearling Filly Open CH	M,Z,L		\$200
2085	HA/AA Yearling Colt/Gelding Open CH	Z,L,M		\$200
<b>2 YR OLD</b>				
*874	Arabian 2 Year Old Colts CH	M,Z,L		\$200
*975	Arabian 2 year Old Gelding CH	M,Z,L		\$200
*976	Arabian 2 Year Old Fillies CH	L,Z,M		\$200
<b>PARK</b>				
2104	Arabian Park Horse JTR CH	F,B,S		\$200
2142	HA/AA Park Horse JTR CH	B,G,F		\$200
61	Arabian Park Horse Open CH	S,B,D		\$200
64	Arabian Park Horse AAOTR CH	F,B,S		\$200
501	HA/AA Park Horse Open CH	B,D,R		\$200
504	HA/AA Park Horse AAOTR CH	S,B,G		\$200
<b>ENGLISH PLEASURE</b>				
82	Arabian English Pleasure JOTR 13 & Under CH	S,B,D		\$200
2106	Arabian English Pleasure JOTR 14-18 CH	F,G,D		\$200
1760	Arabian English Pleasure JTR Select CH	R,G,S		\$200
1762	Arabian English Pleasure JTR Choice CH	S,B,D		\$200
1764	Arabian English Pleasure JTR Elite CH	F,G,D		\$200
76	Arabian English Pleasure Open CH.	F,D,B		\$200
*91	Arabian English Pleasure Junior Horse CH	B,D,R		\$200
2105	Arabian English Pleasure AAOTR 19-39 CH	G,D,F		\$200
79	Arabian English Pleasure AAOTR 40 & Over CH	D,R,B		\$200
358	Arabian English Pleasure AATR CH			\$200
523	HA/AA English Pleasure JOTR 13 & Under CH	B,R,S		\$200
2145	HA/AA English Pleasure JOTR 14-18 CH	D,B,F		\$200
2443	HA/AA English Pleasure JTR Select CH	G,R,S		\$200
2445	HA/AA English Pleasure JTR Choice CH	B,S D		\$200
2447	HA/AA English Pleasure JTR Elite CH	S,B,F		\$200
516	HA/AA English Pleasure Open CH	B,D,F		\$200
*532	HA/AA English Pleasure Junior Horse CH	S,GF,		\$200
2143	HA/AA English Pleasure AAOTR 19-39 CH	R,D,B		\$200
519	HA/AA English Pleasure AAOTR 40 & Over CH	F,B,S		\$200
359	HA/AA English Pleasure AATR CH	D,S,G		\$200
<b>COUNTRY ENGLISH PLEASURE</b>				
103	Arabian Country English Pleasure JOTR 13 & Under CH	G,D,R		\$200
2113	Arabian Country English Pleasure JOTR 14-18 CH	B,F,S		\$200
2223	Arabian Country English Pleasure JTR Select 13 & Under CH	R,F,S		\$200
2224	Arabian Country English Pleasure JTR Select 14 - 18 CH	B,D,G		\$200
1845	Arabian Country English Pleasure JTR Choice CH	F,D,R		\$200
1847	Arabian Country English Pleasure JTR Elite CH	G,D,R		\$200
96	Arabian Country English Pleasure Open CH	S,D,B		\$200
*112	Arabian Country English Pleasure Junior Horse CH	G,D,F		\$200
2110	Arabian Country English Pleasure AAOTR 19-39 CH	F,S,G		\$200
99	Arabian Country English Pleasure AAOTR 40 & Over CH	B,S,D		\$200
1852	Arabian Country English Pleasure AATR Elite CH	G,R,S		\$200
1850	Arabian Country English Pleasure AATR Choice CH	D,B,F		\$200

**New classes for 2020 are shaded**

**\*Sweepstakes Allocated Payback**

**C - Cattle Fee @ \$200 per class TO - Trail Obstacle Fee @ \$25 per class T - Trail Warm up @ \$30 per class J - Jump Obstacle Fee @ \$25.00 per class**

#	Class	Panel	Call	Class Fee
1168	Arabian Country English Pleasure Select AATR CH	F,S,R		\$200
548	HA/AA Country English Pleasure JOTR 13 & Under CH	S,G,D		\$200
2151	HA/AA Country English Pleasure JOTR 14-18 CH	R,B,F		\$200
2675	HA/AA Country English Pleasure JTR Select 13 & Under CH	B,F,D		\$200
2676	HA/AA Country English Pleasure JTR Select 14 - 18 CH	F,S,G		\$200
2645	HA/AA Country English Pleasure JTR Choice CH	R,B,F		\$200
2647	HA/AA Country English Pleasure JTR Elite CH	B,D,S		\$200
541	HA/AA Country English Pleasure CH	F,B,D		\$200
*557	HA/AA Country English Pleasure Junior Horse CH	S,B,F		\$200
2148	HA/AA Country English Pleasure AAOTR 19-39 CH	G,R,S		\$200
544	HA/AA Country English Pleasure AAOTR 40 & Over CH	D,B,F		\$200
2652	HA/AA Country English Pleasure AATR Elite CH	B,F,S		\$200
2650	HA/AA Country English Pleasure AATR Choice CH	F,S,D		\$200
1172	HA/AA Country English Pleasure Select AATR CH	G,S,F		\$200

**WESTERN PLEASURE**

197	Arabian Western Pleasure JOTR 13 & Under CH	S,D,B		\$200
2125	Arabian Western Pleasure JOTR 14-18 CH	B,R,G		\$200
2227	Arabian Western Pleasure JTR Select 13 & Under CH	G,F,S		\$200
2228	Arabian Western Pleasure JTR Select 14 - 18 CH	D,B,R		\$200
1945	Arabian Western Pleasure JTR Choice CH	S,R,F		\$200
1947	Arabian Western Pleasure JTR Elite CH	S,B,G		\$200
191	Arabian Western Pleasure CH	B,G,R		\$200
*205	Arabian Western Pleasure Junior Horse CH	R,S,G		\$200
2123	Arabian Western Pleasure AAOTR 19-39 CH	B,D,S		\$200
194	Arabian Western Pleasure AAOTR 40 & Over CH	D,F,G		\$200
1952	Arabian Western Pleasure AATR Elite CH	S,B,F		\$200
1950	Arabian Western Pleasure AATR Choice CH	R,G,D		\$200
1166	Arabian Western Pleasure Select AATR CH	D,S,B		\$200
628	HA/AA Western Pleasure JOTR 13 & Under CH	D,F,G		\$200
2164	HA/AA Western Pleasure JOTR 14-18 CH	S,B,R		\$200
3175	HA/AA Western Pleasure JTR Select 13 & Under CH	G,D,F		\$200
3176	HA/AA Western Pleasure JTR Select 14 - 18 CH	B,S,R		\$200
3145	HA/AA Western Pleasure JTR Choice CH	R,D,G		\$200
3147	HA/AA Western Pleasure JTR Elite CH	B,S,F		\$200
621	HA/AA Western Pleasure Open CH	S,B,G		\$200
*637	HA/AA Western Pleasure Junior Horse CH	R,G,D		\$200
2161	HA/AA Western Pleasure AAOTR 19-39 CH	G,F,B		\$200
624	HA/AA Western Pleasure AAOTR 40 & Over CH	F,B,D		\$200
3152	HA/AA Western Pleasure AATR Elite CH	B,D,S		\$200
3150	HA/AA Western Pleasure AATR Choice CH	D,S,R		\$200
1170	HA/AA Western Pleasure Select AATR CH	S,R,G		\$200

**HUNTER PLEASURE**

298	Arabian Hunter Pleasure JOTR 13 & Under CH	G,F,S		\$200
2135	Arabian Hunter Pleasure JOTR 14-18 CH	R,B,F		\$200
2225	Arabian Hunter Pleasure JTR Select 13 & Under CH	S,D,G		\$200
2226	Arabian Hunter Pleasure JTR Select 14 - 18 CH	R,S,G		\$200
2245	Arabian Hunter Pleasure JTR Choice CH	B,D,F		\$200
2247	Arabian Hunter Pleasure JTR Elite CH	S,D,R		\$200
291	Arabian Hunter Pleasure Open CH	R,G,F		\$200
*306	Arabian Hunter Pleasure Junior Horse CH	G,F,B		\$200
2133	Arabian Hunter Pleasure AAOTR 19-39 CH	F,B,D		\$200

**New classes for 2020 are shaded****\*Sweepstakes Allocated Payback****C - Cattle Fee @ \$200 per class TO - Trail Obstacle Fee @ \$25 per class T - Trail Warm up @ \$30 per class J - Jump Obstacle Fee @ \$25.00 per class**

#	Class	Panel	Call	Class Fee
294	Arabian Hunter Pleasure AAOTR 40 & Over CH	B,D,S		\$200
2252	Arabian Hunter Pleasure AATR Elite CH	D,S,R		\$200
2250	Arabian Hunter Pleasure AATR Choice CH	S,R,G		\$200
1169	Arabian Hunter Pleasure Select AATR CH	R,G,F		\$200
740	HA/AA Hunter Pleasure JOTR 13 & Under CH	G,F,S		\$200
2173	HA/AA Hunter Pleasure JOTR 14-18 CH	R,D,B		\$200
2985	HA/AA Hunter Pleasure JTR Select 13 & Under CH	G,S,D		\$200
2986	HA/AA Hunter Pleasure JTR Select 14 - 18 CH	F,G,D		\$200
2955	HA/AA Hunter Pleasure JTR Choice CH	S,G,R		\$200
2957	HA/AA Hunter Pleasure JTR Elite CH	B,D,F		\$200
734	HA/AA Hunter Pleasure Open CH	R,G,B		\$200
*749	HA/AA Hunter Pleasure Junior Horse CH	B,D,S		\$200
2171	HA/AA Hunter Pleasure AAOTR 19-39 CH	D,S,R		\$200
737	HA/AA Hunter Pleasure AAOTR 40 & Over CH	S,F,G		\$200
2962	HA/AA Hunter Pleasure AATR Elite CH	R,G,F		\$200
2960	HA/AA Hunter Pleasure AATR Choice CH	G,F,B		\$200
1173	HA/AA Hunter Pleasure Select AATR CH	F,B,D		\$200

## DRIVING

2117	Arabian Pleasure Driving JTD CH	F,S,B		\$200
117	Arabian Pleasure Driving Open CH	F,B,D		\$200
2544	Arabian Pleasure Driving AATD	B,S,G		\$200
2155	HA/AA Pleasure Driving JTD CH	B,G,D		\$200
562	HA/AA Pleasure Driving Open CH	B,S,F		\$200
2545	HA/AA Pleasure Driving AATD CH	S,D,G		\$200
2118	Arabian Country Pleasure Driving JTD CH	S,D,R		\$200
131	Arabian Country Pleasure Driving Open CH	D,G,F		\$200
2546	Arabian Country Pleasure Driving AATD CH	F,B,D		\$200
2156	HA/AA Country Pleasure Driving JTD CH	D,G,S		\$200
576	HA/AA Country Pleasure Driving Open CH	B,F,S		\$200
2547	HA/AA Country Pleasure Driving AATD CH	S,R,G		\$200

## MOUNTED NATIVE COSTUME

159	Arabian Mounted Native Costume JTR 13 & Under CH	F,R,D		\$200
2120	Arabian Mounted Native Costume JTR 14-18 CH	B,S,G		\$200
2119	Arabian Mounted Native Costume JOTR CH	S,G,D		\$200
154	Arabian Mounted Native Costume AAOTR CH	D,B,F		\$200
151	Arabian Mounted Native Costume Open CH	S,R,G		\$200
597	HA/AA Mounted Native Costume JTR 13 & Under CH	B,G,D		\$200
2157	HA/AA Mounted Native Costume JTR 14-18 CH	R,G,F		\$200
2158	HA/AA Mounted Native Costume JOTR	S,F,R		\$200
1190	HA/AA Mounted Native Costume AAOTR CH	G,R,S		\$200
591	HA/AA Mounted Native Costume Open CH	D,B,F		\$200

## LADIES SIDE SADDLE

2041	Arabian Ladies English Side Saddle JOTR CH	S,D,B		\$200
2121	Arabian Ladies' Side Saddle English JTR CH	D,F,S		\$200
2540	Arabian Ladies Side Saddle English AATR CH	B,R,G		\$200
168	Arabian Ladies Side Saddle English CH	S,D,G		\$200
2122	Arabian Ladies' Side Saddle Western JTR CH	S,G,D		\$200
2541	Arabian Ladies Side Saddle Western AATR CH	S,R,G		\$200
173	Arabian Ladies Side Saddle Western CH	D,B,F		\$200
2096	HA/AA Ladies' Side Saddle English JOTR CH	S,D,R		\$200
2159	HA/AA Ladies' Side Saddle English JTR CH	B,F,D		\$200

**New classes for 2020 are shaded**

**\*Sweepstakes Allocated Payback**

**C - Cattle Fee @ \$200 per class TO - Trail Obstacle Fee @ \$25 per class T - Trail Warm up @ \$30 per class J - Jump Obstacle Fee @ \$25.00 per class**

#	Class	Panel	Call	Class Fee
2542	HA/AA Ladies Side Saddle English AATR CH	G,D,B		\$200
608	HA/AA Ladies Side Saddle English CH	S,D,F		\$200
2160	HA/AA Ladies' Side Saddle Western JTR CH	G,R,S		\$200
2543	HA/AA Ladies Side Saddle Western AATR CH	B,F,S		\$200
613	HA/AA Ladies Side Saddle Western CH	F,S,R		\$200
<b>ENGLISH SHOW HACK</b>				
2138	Arabian English Show Hack JOTR CH	G,S,D		\$200
325	Arabian English Show Hack JTR 13 & Under CH	R,D,F		\$200
2140	Arabian English Show Hack JTR 14-18 CH	B,S,G		\$200
316	Arabian English Show Hack Open CH	G,D,B		\$200
319	Arabian English Show Hack AAOTR CH	S,D,F		\$200
2177	HA/AA English Show Hack JOTR CH	R,D,F		\$200
1917	HA/AA English Show Hack JTR 13 & Under CH	S,B,G		\$200
2178	HA/AA English Show Hack JTR 14-18 CH	D,G,R		\$200
755	HA/AA English Show Hack Open CH	R,S,G		\$200
758	HA/AA English Show Hack AAOTR CH	B,D,F		\$200
<b>SPORT HORSE</b>				
1303	Arabian Sport Horse Under Saddle JTR 13 & Under	K,C,W		\$200
1304	Arabian Sport Horse Under Saddle JTR 14-18	W,K,C		\$200
336	Arabian Sport Horse Under Saddle Open CH	C,K,W		\$200
1087	Arabian Sport Horse Under Saddle AATR CH	K,C,W		\$200
342	Arabian SH Under Saddle Junior Horse CH	C,K,W		\$200
1305	HA/AA Sport Horse Under Saddle JTR 13 & Under CH	C,W,K		\$200
1306	HA/AA Sport Horse Under Saddle JTR 14-18 CH	W,K,C		\$200
774	HA/AA Sport Horse Under Saddle Open CH	C,K,W		\$200
1107	HA/AA Sport Horse Under Saddle AATR CH	W,K,C		\$200
780	HA/AA Sport Horse Under Saddle Junior Horse CH	KCW		\$200
74	Arabian Sport Horse Show Hack JTR CH	C,W,K		\$200
1113	HA/AA Sport Horse Show Hack JTR CH	K,C,W		\$200
348	Arabian Sport Horse Show Hack Open CH	C,K,W		\$200
1051	HA/AA Sport Horse Show Hack Open CH	C,WK,		\$200
<b>SPORT HORSE IN HAND</b>				
386	Arabian Sport Horse Mares In-Hand JTH CH	K		\$200
143	Arabian Sport Horse Mares In-Hand 3 & Over AATH CH	K		\$200
40	Arabian Sport Horse Mares In-Hand 3 & Over Open CH	K		\$200
388	Arabian Sport Horse Geldings In-Hand JTR CH	K		\$200
54	Arabian Sport Horse Geldings In-Hand 3 & Over Open CH	K		\$200
149	Arabian Sport Horse Geldings In-Hand 3 & Over AATH CH	K		\$200
47	Arabian Sport Horse Stallions In-Hand 3 & Over Open CH	K		\$200
2719	Arabian Sport Horse Stallions In-Hand 3 & Over AATH CH	K		\$200
491	HA/AA Sport Horse Mares In-Hand JTR CH	K		\$200
476	HA/AA Sport Horse Mares In-Hand 3 & Over Open CH	K		\$200
163	HA/AA Sport Horse Mares In-Hand 3 & Over AATH CH	K		\$200
493	HA/AA Sport Horse Geldings In-Hand JTR CH	K		\$200
495	HA/AA Sport Horse Geldings In-Hand 3 & Over Open CH	K		\$200
189	HA/AA Sport Horse Geldings In-Hand 3 & Over AATH CH	K		\$200
<b>SHOWMANSHIP</b>				
917	A/HA/AA Showmanship JTH Walk/Trot 10 & Under CH	B,G,D		\$200
921	A/HA/AA Showmanship JTH 13 & Under CH	D,S,G		\$200
2180	A/HA/AA Showmanship JTH 14-18 CH	B,R,F		\$200
1372	A/HA/AA Showmanship AATH 19 & Over CH	R,G,B		\$200

**New classes for 2020 are shaded**

**\*Sweepstakes Allocated Payback**

**C - Cattle Fee @ \$200 per class TO - Trail Obstacle Fee @ \$25 per class T - Trail Warm up @ \$30 per class J - Jump Obstacle Fee @ \$25.00 per class**

#	Class	Panel	Call	Class Fee
<b>EQUITATION</b>				
957	UPHA Arabian Breeds Challenge Cup JTR 14-17 CH	U		\$250
958	UPHA Arabian Breeds Challenge Cup JTR 13 & Under CH	U		\$250
930	Arabian Saddle Seat Equitation JTR 13 & Under CH	S,B,D		\$200
2181	Arabian Saddle Seat Equitation JTR 14-18 CH	D,B,F		\$200
1010	HA/AA Saddle Seat Equitation JTR 13 & Under CH	F,G,R		\$200
2182	HA/AA Saddle Seat Equitation JTR 14-18 CH	D,S,B		\$200
944	Arabian Hunter Seat Equitation Not To Jump JTR 13 & Under CH	H1		\$200
2185	Arabian Hunter Seat Equitation Not To Jump JTR 14-18 CH	H2		\$200
1018	HA/AA Hunter Seat Equitation Not To Jump JTR 13 & Under CH	H3		\$200
2186	HA/AA Hunter Seat Equitation Not To Jump JTR 14-18 CH	H1		\$200
1358	A/HA/AA Hunter Seat Equitation Not to Jump AATR CH	H2		\$200
1048	Arabian Western Horsemanship JTR 13 & Under CH	W3		\$200
2188	Arabian Western Horsemanship JTR 14-18 CH	W1		\$200
1049	HA/AA Western Horsemanship JTR 13 & Under CH	W2		\$200
2189	HA/AA Western Horsemanship JTR 14-18 CH	W3		\$200
1359	A/HA/AA Western Horsemanship AATR CH	W3		\$200
937	Arabian Reining Seat Equitation JTR 13 & Under CH	W1		\$200
2183	Arabian Reining Seat Equitation JTR 14 - 18 CH	W2		\$200
1014	HA/AA Reining Seat Equitation JTR 13 & Under CH	W3		\$200
2184	HA/AA Reining Seat Equitation JTR 14-18 CH	W1		\$200
<b>WALK/TROT EQUITATION</b>				
905	UPHA Arabian Breeds Challenge Cup Walk/Trot 10 & Under CH	U		\$250
909	Arabian Saddle Seat Equitation Walk/Trot 10 & Under CH	B,D,S		\$200
910	HA/AA Saddle Seat Equitation Walk-Trot 10 & Under CH	D,S,F		\$200
912	Arabian Western Seat Equitation Walk-Trot 10 & Under CH	D,R,G		\$200
914	HA/AA Western Seat Equitation Walk-Trot 10 & Under CH	S,G,R		\$200
1005	Arabian Hunter Seat Equitation Not To Jump JTR W/T 10 & Under CH	H2		\$200
1006	HA/AA Hunter Seat Equitation Not To Jump JTR W/T 10 & Under CH	H3		\$200
<b>WALK/TROT PLEASURE</b>				
893	A/HA/AA English Pleasure Walk/Trot 10 & Under CH	D,G,S		\$200
896	Arabian Country English Pleasure Walk/Trot 10 & Under CH	R,F,G		\$200
897	HA/AA Country English Pleasure Walk/Trot 10 & Under CH	S,B,G		\$200
899	Arabian Western Pleasure Walk/Trot 10 & Under CH	B,G,R		\$200
900	HA/AA Western Pleasure Walk/Trot 10 & Under CH	D,G,S		\$200
906	Arabian Hunter Pleasure Walk/Trot 10 & Under CH	R,F,G		\$200
916	HA/AA Hunter Pleasure Walk-Trot 10 & Under CH	S,B,G		\$200

New classes for 2020 are shaded

\*Sweepstakes Allocated Payback

C - Cattle Fee @ \$200 per class TO - Trail Obstacle Fee @ \$25 per class T - Trail Warm up @ \$30 per class J - Jump Obstacle Fee @ \$25.00 per class

# ATTENTION EXHIBITORS!

REMEMBER TO PICK UP YOUR AWARDS.

THE AWARDS ROOM WILL BE OPEN FOR ONE HOUR AFTER COMPLETION OF CLASSES EACH DAY.



#	Class	Panel	Call	Class Fee
<b>WALK TROT MISC</b>				
1549	A/HA/AA Sport Horse Under Saddle Walk/Trot 10 & Under CH	SH1		\$200
903	A/HA/AA Dressage Intro Walk/Trot 10 & Under CH	D2		\$200
1021	A/HA/AA Trail Walk/Trot 10 & Under	W2		\$200
390	A/HA/AA Short Stirrup Reining 10 & Under CH	W2		\$200
1599	A/HA/AA Working Hunter Cross Rails Walk/Trot 10 & Under CH	H1		\$200
<b>DRESSAGE &amp; DRESSAGE SEAT EQUITATION</b>				
431	A/HA/AA Dressage Equitation JTR 13 & Under CH	D1		\$200
1440	A/HA/AA Dressage Equitation JTR 14 -18 CH	D2		\$200
512	A/HA/AA Dressage Training Level JOTR 13 & Under CH	D2		\$200
1433	A/HA/AA Dressage Training Level JOTR 14-18 CH	D1		\$200
794	A/HA/AA Dressage Training Level JTR 13 & Under CH	D2		\$200
1432	A/HA/AA Dressage Training Level JTR 14-18 CH	D1		\$200
2530	A/HA/AA Dressage Training Level AATR CH	D1		\$200
795	A/HA/AA Dressage Training Level Open CH	D2		\$200
514	A/HA/AA Dressage First Level JOTR 13 & Under CH	D2		\$200
1435	A/HA/AA Dressage First Level JOTR 14-18 CH	D1		\$200
803	A/HA/AA Dressage First Level JTR 13 & Under CH	D2		\$200
1434	A/HA/AA Dressage First Level JTR 14-18 CH	D1		\$200
798	A/HA/AA Dressage First Level Open CH	D1		\$200
2531	A/HA/AA Dressage First Level AATH CH	D2		\$200
1436	A/HA/AA Dressage Second Level JTR CH	D2		\$200
1808	A/HA/AA Dressage Second Level Open CH	D1		\$200
1437	A/HA/AA Dressage Third Level JTR CH	D1		\$200
816	A/HA/AA Dressage Third Level Open CH	D2		\$200
<b>WESTERN DRESSAGE</b>				
2212	A/HA/AA Western Dressage Intro JTR CH	K		\$200
2312	A/HA/AA Western Dressage Basic JTR CH	K		\$200
<b>REINING</b>				
996	A/HA/AA Free Style Reining JTR Exhibition	W1		\$200
2012	Arabian Reining Horse JOTR 13 & Under CH	W3		\$200
2013	Arabian Reining Horse JOTR 14-18 CH	W1		\$200
1648	Arabian Reining Horse JTR CH	W2		\$200
3187	Arabian Reining Horse Intermediate JTR CH	W2		\$200
3188	Arabian Reining Horse Limited JTR CH	W2		\$200
3189	Arabian Reining Horse Rookie JTR CH	W2		\$200
226	Arabian Reining Open CH	W2		\$200
1459	Arabian Reining Horse AATR CH	W3		\$200
2016	HA/AA Reining Horse JOTR 13 & Under CH	W1		\$200
2017	HA/AA Reining Horse JOTR 14-18 CH	W2		\$200
1184	HA/AA Reining Horse JTR CH	W3		\$200
3197	HA/AA Reining Horse Intermediate JTR CH	W3		\$200
3198	HA/AA Reining Horse Limited JTR CH	W3		\$200
3199	HA/AA Reining Horse Rookie JTR CH	W3		\$200
661	HA/AA Reining Horse CH	W2		\$200
1469	HA/AA Reining Horse AATR CH	W1		\$200
<b>RANCH RIDING</b>				
3030	Arabian Ranch Riding JTR 13 & Under CH	W1		\$200
3031	Arabian Ranch Riding JTR 14-18 CH	W2		\$200
3007	Arabian Ranch Riding Open CH	W2		\$200

New classes for 2020 are shaded

\*Sweepstakes Allocated Payback

C - Cattle Fee @ \$200 per class TO - Trail Obstacle Fee @ \$25 per class T - Trail Warm up @ \$30 per class J - Jump Obstacle Fee @ \$25.00 per class

#	Class	Panel	Call	Class Fee
3043	Arabian Ranch Riding AATR CH	W3		\$200
3046	HA/AA Ranch Riding JTR 13 & Under CH	W3		\$200
3047	HA/AA Ranch Riding JTR 14-18 CH	W1		\$200
3027	HA/AA Ranch Riding Open CH	W2		\$200
3039	HA/AA Ranch Riding AATR CH	W3		\$200

**TRAIL**

**Additional Fees TO =Trail Obstacle Per Horse \$25, T - Trail Warm up \$30 Per class**

2390	Arabian English Trail Horse JTR CH	W2	T,TO	\$230
180	Arabian English Trail Horse Open CH	W3	T,TO	\$230
2481	Arabian English Trail Horse AATR CH	W2	T,TO	\$230
2384	HA/AA English Trail Horse JTR CH	W3	T,TO	\$230
692	HA/AA English Trail Horse Open CH	W3	T,TO	\$230
2483	HA/AA English Trail Horse AATR CH	W2	T,TO	\$230
1174	Arabian Western Trail Horse JOTR CH	W1	T,TO	\$230
224	Arabian Western Trail Horse JTR 13 & Under CH	W2	T,TO	\$230
2129	Arabian Western Trail Horse JTR 14-18 CH	W3	T,TO	\$230
1535	Arabian Trail Horse JTR Select CH	W1	T,TO	\$230
211	Arabian Western Trail Horse Open CH	W2	T,TO	\$230
2482	Arabian Western Trail Horse AATR CH	W1	T,TO	\$230
1176	HA/AA Western Trail Horse JOTR CH	W3	T,TO	\$230
659	HA/AA Western Trail Horse JTR 13 & Under CH	W1	T,TO	\$230
2169	HA/AA Western Trail Horse JTR 14-18 CH	W2	T,TO	\$230
1888	HA/AA Western Trail Horse JTR Select CH	W3	T,TO	\$230
646	HA/AA Western Trail Horse Open CH	W3	T,TO	\$230
2484	HA/AA Western Trail Horse AATR CH	W2	T,TO	\$230

**REINED COW & HERD WORK**

**Additional Fees Cattle Fee \$200 (no charge Sponsored) Cattle Practice \$35 per cow 5 min**

3044	A/HA/AA Herd Work JTR CH	W2	C, CP	\$235
537	Arabian Reined Cow Horse JTR CH	W3	C, CP	\$235
538	HA/AA Reined Cow Horse JTR CH	W1	C, CP	\$235
1136	Arabian Limited Reined Cow Horse JTR	W1	C, CP	\$235
1143	HA/AA Limited Reined Cow Horse JTR	W2	C, CP	\$25

**WORKING HUNTER & EQUITATION OVER OBSTACLES**

**Additional Fees JO = Jump Obstacle Per horse, W= Warm up \$30 per class**

2187	A/HA/AA Hunter Seat Equitation Over Obstacles JTR CH	H1	JO, W	\$230
1380	A/HA/AA Hunter Seat Equitation Over Obstacles AATR CH	H2	JO, W	\$230
330	Arabian Regular Working Hunter JTR CH	H3	JO, W	\$230
268	Arabian Working Hunter AOTR CH	H1	JO, W	\$230
1208	Arabian Working Hunter AATR CH	H2	JO, W	\$230
266	Arabian Working Hunter Open CH	H3	JO, W	\$230
784	HA/AA Regular Working Hunter JTR CH	H2	JO, W	\$230
713	HA/AA Working Hunter AOTR	H1	JO, W	\$230
1792	HA/AA Working Hunter AATR CH	H2	JO, W	\$230
711	HA/AA Working Hunter Open CH	H3	JO, W	\$230
1608	A/HA/AA Working Hunter 14.2 & Under JTR CH	H2	JO, W	\$230
2141	Arabian Hunter Hack JTR CH	H1	JO	\$200
2179	HA/AA Hunter Hack JTR CH	H3	JO	\$200
361	Arabian Hunter Hack Open CH	H2	JO	\$200
767	HA/AA Hunter Hack Open CH	H1	JO	\$200

**New classes for 2020 are shaded**

**\*Sweepstakes Allocated Payback**

**C - Cattle Fee @ \$200 per class TO – Trail Obstacle Fee @ \$25 per class T – Trail Warm up @ \$30 per class J - Jump Obstacle Fee @ \$25.00 per class**

**MISC**

2385	AWPA Arabian Horse Times \$15,000 Arabian Western Pleasure AAOTR Maturity	Bates, Brown, S,D,F	\$200
2400	AWPA Equine Athlete \$15,000 Half-Arabian Western Pleasure AAOTR Maturity	Brown, Bates, D,S,B	\$200

**EXHIBITION**

2004	A/HA/AA Lead Line Open 2-6 EXHIBITION	TBA	\$000
------	---------------------------------------	-----	-------

**EXPERIENCE AHYA**

3201	A/HA/AA Showmanship 14-18 JTH Exhibition		\$35
3202	A/HA/AA Showmanship 11-13 JTH E Exhibition		\$35
3203	A/HA/AA Showmanship W/T 10 & Under Exhibition		\$35
3204	A/HA/AA Western Pleasure 14 -18 JTR Exhibition		\$35
3205	A/HA/AA Western Pleasure 11-13 JTR Exhibition		\$35
3206	A/HA/AA Western Pleasure Walk/Jog- 10 & Under Exhibition		\$35
3207	A/HA/AA Western Seat Equitation 14 - 18 JTR Exhibition		\$35
3208	A/HA/AA Western Seat Equitation 11-13 JTR Exhibition		\$35
3209	A/HA/AA Western Seat Equitation Walk/Jog 10 & Under Exhibition		\$35
3210	A/HA/AA Hunter Pleasure 14-18 JTR Exhibition		\$35
3211	A/HA/AA Hunter Pleasure 11-13 JTR Exhibition		\$35
3212	A/HA/AA Hunter Pleasure W/T 10 & Under Exhibition		\$35
3213	A/HA/AA Hunt Seat Equitation - Not to Jump 14 - 18 JTR Exhibition		\$35
3214	A/HA/AA Hunt Seat Equitation - Not to Jump 11-13 JTR Exhibition		\$35
3215	A/HA/AA Hunt Seat Equitation - Not to Jump W/T 10 & Under Exhibition		\$35
3216	A/HA/AA Country English Pleasure 114 - 18 JTR Exhibition		\$35
3217	A/HA/AA Country English Pleasure 11-13 JTR Exhibition		\$35
3218	A/HA/AA Country English Pleasure W/T 10 & Under Exhibition		\$35
3219	A/HA/AA Saddle Seat Equitation 14-18 JTR Exhibition		\$35
3220	A/HA/AA Saddle Seat Equitation 11-13 JTR Exhibition		\$35
3221	A/HA/AA Saddle Seat Equitation W/T 10 & Under Exhibition		\$35
3222	A/HA/AA Leadline JTR 2 - 6 Exhibition		\$35
3223	A/HA/AA Pleasure W/T 11 & Over all Seats Exhibition		\$35

**New classes for 2020 are shaded**

**\*Sweepstakes Allocated Payback**

**C - Cattle Fee @ \$200 per class TO – Trail Obstacle Fee @ \$25 per class T – Trail Warm up @ \$30 per class J - Jump Obstacle Fee @ \$25.00 per class**

# CALLING YOUTH RIDERS!

## Want To Carry a Flag During Opening Ceremonies?

Please contact [youth@arabianhorses.org](mailto:youth@arabianhorses.org)  
by July 23 if interested.

*\*Graduating seniors will get first choice of flags*







FRIDAY MORNING, July 17, 2020

JIM NORRICK ARENA 8 AM

SPECIALTY ARENA 8 AM

CL#	SEC	DESCRIPTION	CL#	SEC	DESCRIPTION
2178	HA/AA	English Show Hack JTR 14-18 CH			
597	HA/AA	Mounted Native Costume JTR 13 & Under CH			
737	HA/AA	Hunter Pleasure AAOTR 40 & Over CH			
2445	HA/AA	English Pleasure JTR Choice CH			
2133	A	Arabian Hunter Pleasure AAOTR 19-39 CH			
2133	B	Arabian Hunter Pleasure AAOTR 19-39 CH			
2985	SF/F	HA/AA Hunter Pleasure JTR Select 13 & Under CH			
151	SF/F	Arabian Mounted Native Costume CH			

WALK-THROUGH 7:45 AM

Performance Arena Breaks TBA

CL#	SEC	DESCRIPTION
211	SF	Arabian Trail Horse CH
646	SF	HA/AA Trail Horse CH

Specialty Arena Breaks TBA

CL#	SEC	DESCRIPTION
2531	A/HA/AA	Dressage First Level AATR
1432	A/HA/AA	Dressage Training Level JTR 14 - 18 CH
1808	A/HA/AA	Dressage Second Level CH
794	A/HA/AA	Dressage Training Level JTR 13 & Under CH

FRIDAY AFTERNOON

JIM NORRICK ARENA 1:00 PM

CL#	SEC	DESCRIPTION
2117	SF/F	Arabian Pleasure Driving JTD CH
2135	A	Arabian Hunter Pleasure JOTR 14-18 CH
2135	B	Arabian Hunter Pleasure JOTR 14-18 CH
1952	SF/F	Arabian Western Pleasure AATR Elite CH
2676	A	HA/AA County English Pleasure JTR Select 14-18 CH
2676	B	HA/AA County English Pleasure JTR Select 14-18 CH
2143	SF/F	HA/AA English Pleasure AAOTR 19-39 CH
2041	SF/F	Arabian Ladies Side Saddle English JOTR CH
319	SF/F	Arabian English Show Hack AAOTR CH
905	PH-2	UPHA Arabian Breeds Challenge Cup Walk/Trot 10 & Under CH
3150	SF/F	HA/AA Western Pleasure AATR Choice CH

FRIDAY EVENING 7:00 PM

CL#	SEC	DESCRIPTION
958	PH-2	UPHA Arabian Breeds Challenge Cup JTR 13 & Under CH
957	PH-2	UPHA Arabian Breeds Challenge Cup JTR 14-17 CH
2650	SF/F	HA/AA County English Pleasure AATR Choice CH
306	SF/F	Arabian Hunter Pleasure Junior Horse CH
\$1,500 Available Sweepstakes Prize Money for those eligible		
CH - \$400	RC - \$300	TT - \$100
1762	SF/F	Arabian English Pleasure JTR Choice CH
168	SF/F	Arabian Ladies Side Saddle English CH

SPECIALTY ARENA - Approx 7 PM

2312 A/HA/AA Western Dressage Basic JTR CH

When entering, please be aware of entering classes which might run in different rings at the same time. Every effort will be made to solve these conflicts, however rings will not be held for extensive periods to resolve conflicts. Entry fees will be forfeited in case of time conflicts caused by two rings running simultaneously that can't be resolved.

Exhibitor Welcome Dinner 5-7 PM - Sales Arena

TRAIL WARM UPS

SATURDAY MORNING, July 18, 2020		SPECIALTY ARENA 8 AM	
JIM NORICK ARENA 8 AM		PERFORMANCE ARENA 8:00 AM	
CL#	SEC	WALK-THROUGH 7:45 AM	Specialty Arena Breaks TBA
2547 HA/AA Country Pleasure Driving AATD CH	SF/F		
2164 HA/AA Western Pleasure JOTR 14-18 CH	SF/F		
194 Arabian Western Pleasure AAO TR 40 & Over CH	A	Performance Arena Breaks TBA	
194 Arabian Western Pleasure AAO TR 40 & Over CH	B		
2245 Arabian Hunter Pleasure JTR Choice 18 & Under CH	SF/F		
916 HA/AA Hunter Pleasure Walk/Trot 10 & Under CH	SF/F		
2138 Arabian English Show Hack JOTR CH	SF/F		
291 Arabian Hunter Pleasure CH	A	Reset course & Walk Thru	
291 Arabian Hunter Pleasure CH	B	2481 Arabian English Trail Horse AATR CH	
		2483 HA/AA English Trail Horse AATR CH	
		Reset course & Walk Thru	
		2390 Arabian English Trail Horse JTR CH	
		2384 HA/AA English Trail Horse JTR CH	
		Reset course & Walk Thru	
		2129 Arabian Western Trail Horse JTR 14-18 CH	
		2169 HA/AA Western Trail Horse JTR 14-18 CH	
		1174 Arabian Western Trail Horse JOTR CH	
		1176 HA/AA Western Trail Horse JOTR CH	
		2482 Arabian Trail Horse AATR CH	
		2484 HA/AA Trail Horse AATR CH	
		Reset course & Walk Thru	
		1021 A/HA/AA Western Trail Horse Walk/Trot 10 & Under CH	
		Reset course & Walk Thru	
		224 Arabian Western Trail Horse JTR 13 & Under CH	
		659 HA/AA Western Trail Horse JTR 13 & Under CH	
		Reset course & Walk Thru	
		1535 Arabian Western Trail Horse JTR Select CH	
		1888 HA/AA Western Trail Horse JTR Select CH	
		Reining warm ups	
SATURDAY JIM NORICK ARENA 1:00 PM			
CL#	SEC		
2122 Arabian Ladies Side Saddle Western JTR CH	SF/F		
294 Arabian Hunter Pleasure AAO TR 40 & Over CH	A		
294 Arabian Hunter Pleasure AAO TR 40 & Over CH	B		
298 Arabian Hunter Pleasure JOTR 13 & Under CH	A		
298 Arabian Hunter Pleasure JOTR 13 & Under CH	B		
358 Arabian English Pleasure AATR CH	SF/F		
1950 Arabian Western Pleasure AATR Choice CH	SF/F		
2224 Arabian Country English Pleasure JTR Select 14-18 CH	A		
2224 Arabian Country English Pleasure JTR Select 14-18 CH	B		
1190 HA/AA Mounted Native Costume AAO TR CH	SF/F		
SATURDAY JIM NORICK ARENA 7:00 PM			
CL#	SEC		
2180 A/HA/AA Showmanship JTH 14-18 CH	A		
930 Arabian Saddle Seat Equitation JTR 13 & Under CH	SF/F		
2180 A/HA/AA Showmanship JTH 14-18 CH	B		
359 HA/AA English Pleasure AATR CH	SF/F		
91 Arabian English Pleasure Jr Horse	SF/F		
\$1,500 Available Sweepstakes Prize Money for those eligible			
CH - \$400			
RC - \$300			
TT - \$100			

When entering, please be aware of entering classes which might run in different rings at the same time. Every effort will be made to solve these conflicts, however rings will not be held for extensive periods to resolve conflicts. Entry fees will be forfeited in case of time conflicts caused by two rings running simultaneously that can't be resolved.





TUESDAY MORNING, July 21, 2020

TUESDAY  
SPECIALTY ARENA - 8:00 AM

PERFORMANCE ARENA 8:00 AM

JIM NORRICK ARENA 8:00 AM

CL#	SEC	CL#	SEC	CL#	SEC
562 HA/AA Pleasure Driving CH	SF/F	1051 HA/AA Sport Horse Show Hack CH	SF/F	1051 HA/AA Sport Horse Show Hack CH	SF/F
2182 HA/AA Saddle Seat Equitation JTR 14-18 CH	A	1304 Arabian Sport Horse Under Saddle JTR 14-18 CH	A	1304 Arabian Sport Horse Under Saddle JTR 14-18 CH	A
2148 HA/AA Country English Pleasure AAOTR 19-39 CH	A	780 HA/AA Sport Horse Under Saddle Junior Horse CH	SFF	336 Arabian Sport Horse Under Saddle CH	A
2148 HA/AA Country English Pleasure AAOTR 19-39 CH	B	336 Arabian Sport Horse Under Saddle CH	B	1113 HA/AA Sport Horse Show Hack JTR CH	SF/F
637 HA/AA Western Pleasure Junior Horse CH	SF/F	1087 Arabian Sport Horse Under Saddle AAOTR CH	A	1087 Arabian Sport Horse Under Saddle AAOTR CH	B
\$1,500 Available Sweepstakes Prize Money for those eligible					
CH - \$400 RC - \$300 TT - \$100					
2986 HA/AA Hunter Pleasure JTR Select 14-18 CH	A				
2986 HA/AA Hunter Pleasure JTR Select 14-18 CH	B				
291 Arabian Hunter Pleasure CH	SF/F				
899 Arabian Western Pleasure Walk/Trot 10 & Under CH	SF/F				
2160 HA/AA Ladies Side Saddle Western JTR CH	SF/F				

Classes 1648, 3187, 3188, 3189 will run concurrently with Pattern 3

1648 Arabian Reining JTR CH	SF
3187 Arabian Reining Intermediate JTR CH	SF
3188 Arabian Reining Limited JTR CH	SF
3189 Arabian Reining Rookie JTR CH	SF

3 DRAGS

CL#	SEC	CL#	SEC
117 Arabian Pleasure Driving CH	SF/F	1305 HA/AA Sport Horse Under Saddle JTR 13 & Under CH	SF/F
2182 HA/AA Saddle Seat Equitation JTR 14-18 CH	B	348 Arabian Sport Horse Show Hack CH	SF/F
2252 Arabian Hunter Pleasure AAOTR Elite CH	SF/F	1549 AH/AA Sport Horse Under Saddle Walk/Trot 10 & Under CH	A
76 Arabian English Pleasure CH	SF/F	1549 AH/AA Sport Horse Under Saddle Walk/Trot 10 & Under CH	B
194 Arabian Western Pleasure AAOTR 40 & Over CH	SF/F	342 Arabian Sport Horse Under Saddle Junior Horse CH	SFF
758 HA/AA English Show Hack AAOTR CH	SF/F	774 HA/AA Sport Horse Under Saddle CH	A
501 HA/AA Park Horse CH	SF/F	774 HA/AA Sport Horse Under Saddle CH	B
1169 Arabian Hunter Pleasure AAOTR Select CH	SF/F	1306 HA/AA Sport Horse Under Saddle JTR 14-18 CH	A
		1306 HA/AA Sport Horse Under Saddle JTR 14-18 CH	B
		74 Arabian Sport Horse Show Hack JTR CH	SF/F
		1107 HA/AA Sport Horse Under Saddle AAOTR CH	A
		1107 HA/AA Sport Horse Under Saddle AAOTR CH	B

CL#	SEC	CL#	SEC
131 Arabian Country Pleasure Driving CH	SF/F		
2133 Arabian Hunter PL AAOTR 19-39 CH	SFF		
519 HA/AA English Pleasure AAOTR 40 & Over CH	SF/F		
2385 AWPA Arabian Horse Times \$15,000 Arabian West Pl AAOTR Maturity	SFF		
64 Arabian Park Horse AAOTR CH	SF/F		
591 HA/AA Mounted Native Costume CH	SF/F		

When entering, please be aware of entering classes which might run in different rings at the same time. Every effort will be made to solve these conflicts, however rings will not be held for extensive periods to resolve conflicts. Entry fees will be forfeited in case of time conflicts caused by two rings running simultaneously that can't be resolved.

Reining warm ups - Approx. 7 - 9 pm

TUESDAY AFTERNOON  
JIM NORRICK ARENA 1:00 PM

TUESDAY EVENING  
JIM NORRICK ARENA 7:00 PM

WEDNESDAY MORNING, July 22, 2020																																																																																					
JIM NORICK ARENA 8:00 AM	SPECIALTY ARENA - 8:00 AM																																																																																				
<table border="1"> <thead> <tr> <th>CL#</th> <th>SEC</th> <th>CL#</th> <th>SEC</th> </tr> </thead> <tbody> <tr> <td>576 HA/AA Country Pleasure Driving CH</td> <td>SF/F</td> <td>1304 Arabian Sport Horse Under Saddle JTR 14-18 CH</td> <td>SF/F</td> </tr> <tr> <td>2161 HA/AA Western Pleasure AAOTR 19-39 CH</td> <td>SF/F</td> <td>774 HA/AA Sport Horse Under Saddle CH</td> <td>SF/F</td> </tr> <tr> <td>749 HA/AA Hunter Pleasure Junior Horse CH</td> <td>SF/F</td> <td>1549 AHA/AA Sport Horse Under Saddle Walk/Trot 10 &amp; Under CH</td> <td>SF/F</td> </tr> <tr> <td colspan="4">\$1,500 Available Sweepstakes Prize Money for those eligible</td> </tr> <tr> <td>CH - \$400</td> <td></td> <td>1087 Arabian Sport Horse Under Saddle AATR CH</td> <td>SF/F</td> </tr> <tr> <td>RC - \$300</td> <td></td> <td>1306 HA/AA Sport Horse Under Saddle JTR 14-18 CH</td> <td>SF/F</td> </tr> <tr> <td>TT - \$100</td> <td></td> <td>336 Arabian Sport Horse Under Saddle CH</td> <td>SF/F</td> </tr> <tr> <td>1847 Arabian Country English Pleasure JTR Elite CH</td> <td>A</td> <td>1303 Arabian Sport Horse Under Saddle JTR 13 &amp; Under CH</td> <td>SF/F</td> </tr> <tr> <td>1847 Arabian Country English Pleasure JTR Elite CH</td> <td>B</td> <td>1107 HA/AA Sport Horse Under Saddle AATR CH</td> <td>SF/F</td> </tr> <tr> <td>1173 HA/AA Hunter PIAATR Select CH</td> <td>SF/F</td> <td></td> <td></td> </tr> <tr> <td>897 HA/AA Country English Pleasure Walk/Trot 10 &amp; Under CH</td> <td>SF/F</td> <td></td> <td></td> </tr> <tr> <td>1166 Arabian Western Pleasure AATR Select CH</td> <td>SF/F</td> <td></td> <td></td> </tr> <tr> <td>613 HA/AA Ladies Side Saddle Western CH</td> <td>SF/F</td> <td></td> <td></td> </tr> </tbody> </table>	CL#	SEC	CL#	SEC	576 HA/AA Country Pleasure Driving CH	SF/F	1304 Arabian Sport Horse Under Saddle JTR 14-18 CH	SF/F	2161 HA/AA Western Pleasure AAOTR 19-39 CH	SF/F	774 HA/AA Sport Horse Under Saddle CH	SF/F	749 HA/AA Hunter Pleasure Junior Horse CH	SF/F	1549 AHA/AA Sport Horse Under Saddle Walk/Trot 10 & Under CH	SF/F	\$1,500 Available Sweepstakes Prize Money for those eligible				CH - \$400		1087 Arabian Sport Horse Under Saddle AATR CH	SF/F	RC - \$300		1306 HA/AA Sport Horse Under Saddle JTR 14-18 CH	SF/F	TT - \$100		336 Arabian Sport Horse Under Saddle CH	SF/F	1847 Arabian Country English Pleasure JTR Elite CH	A	1303 Arabian Sport Horse Under Saddle JTR 13 & Under CH	SF/F	1847 Arabian Country English Pleasure JTR Elite CH	B	1107 HA/AA Sport Horse Under Saddle AATR CH	SF/F	1173 HA/AA Hunter PIAATR Select CH	SF/F			897 HA/AA Country English Pleasure Walk/Trot 10 & Under CH	SF/F			1166 Arabian Western Pleasure AATR Select CH	SF/F			613 HA/AA Ladies Side Saddle Western CH	SF/F			<table border="1"> <thead> <tr> <th>CL#</th> <th>SEC</th> <th>CL#</th> <th>SEC</th> </tr> </thead> <tbody> <tr> <td>2183 Arabian Reining Seat Equitation JTR 14-18 CH</td> <td>SF/F</td> <td>Pattern 11</td> <td>SF/F</td> </tr> <tr> <td>937 Arabian Reining Seat Equitation JTR 13 &amp; Under CH</td> <td>Pattern 11</td> <td>Pattern 11</td> <td>SF/F</td> </tr> <tr> <td>2490 HA/AA Performance Halter Geldings 3+ AAATH</td> <td></td> <td></td> <td></td> </tr> </tbody> </table>	CL#	SEC	CL#	SEC	2183 Arabian Reining Seat Equitation JTR 14-18 CH	SF/F	Pattern 11	SF/F	937 Arabian Reining Seat Equitation JTR 13 & Under CH	Pattern 11	Pattern 11	SF/F	2490 HA/AA Performance Halter Geldings 3+ AAATH															
CL#	SEC	CL#	SEC																																																																																		
576 HA/AA Country Pleasure Driving CH	SF/F	1304 Arabian Sport Horse Under Saddle JTR 14-18 CH	SF/F																																																																																		
2161 HA/AA Western Pleasure AAOTR 19-39 CH	SF/F	774 HA/AA Sport Horse Under Saddle CH	SF/F																																																																																		
749 HA/AA Hunter Pleasure Junior Horse CH	SF/F	1549 AHA/AA Sport Horse Under Saddle Walk/Trot 10 & Under CH	SF/F																																																																																		
\$1,500 Available Sweepstakes Prize Money for those eligible																																																																																					
CH - \$400		1087 Arabian Sport Horse Under Saddle AATR CH	SF/F																																																																																		
RC - \$300		1306 HA/AA Sport Horse Under Saddle JTR 14-18 CH	SF/F																																																																																		
TT - \$100		336 Arabian Sport Horse Under Saddle CH	SF/F																																																																																		
1847 Arabian Country English Pleasure JTR Elite CH	A	1303 Arabian Sport Horse Under Saddle JTR 13 & Under CH	SF/F																																																																																		
1847 Arabian Country English Pleasure JTR Elite CH	B	1107 HA/AA Sport Horse Under Saddle AATR CH	SF/F																																																																																		
1173 HA/AA Hunter PIAATR Select CH	SF/F																																																																																				
897 HA/AA Country English Pleasure Walk/Trot 10 & Under CH	SF/F																																																																																				
1166 Arabian Western Pleasure AATR Select CH	SF/F																																																																																				
613 HA/AA Ladies Side Saddle Western CH	SF/F																																																																																				
CL#	SEC	CL#	SEC																																																																																		
2183 Arabian Reining Seat Equitation JTR 14-18 CH	SF/F	Pattern 11	SF/F																																																																																		
937 Arabian Reining Seat Equitation JTR 13 & Under CH	Pattern 11	Pattern 11	SF/F																																																																																		
2490 HA/AA Performance Halter Geldings 3+ AAATH																																																																																					
JIM NORICK ARENA 1:00 PM	SPECIALTY ARENA - Approx 1:00 PM																																																																																				
<table border="1"> <thead> <tr> <th>CL#</th> <th>SEC</th> <th>CL#</th> <th>SEC</th> </tr> </thead> <tbody> <tr> <td>154 Arabian Native Costume AAOTR CH</td> <td>SF/F</td> <td>2141 Arabian Hunter Hack JTR CH</td> <td>SF/F</td> </tr> <tr> <td>900 HA/AA Western Pleasure Walk/Trot 10 &amp; Under CH</td> <td>SF/F</td> <td>767 HA/AA Hunter Hack CH</td> <td>SF/F</td> </tr> <tr> <td>2226 Arabian Hunter Pleasure JTR Select 14-18 CH</td> <td>SF/F</td> <td>2179 HA/AA Hunter Hack JTR CH</td> <td>SF/F</td> </tr> <tr> <td>2652 HA/AA Country English Pleasure AATR Elite CH</td> <td>SF/F</td> <td>361 Arabian Hunter Hack CH</td> <td>SF/F</td> </tr> <tr> <td>906 Arabian Hunter Pleasure Walk/Trot 10 &amp; Under CH</td> <td>SF/F</td> <td colspan="2" style="text-align: center;">CROSS RAIL EXHIBITORS ONLY OPEN SCHOOLING Approx. 4:30-5:00</td> </tr> <tr> <td>2148 HA/AA Country English Pleasure AAOTR 19-39 CH</td> <td>SF/F</td> <td></td> <td></td> </tr> <tr> <td>2140 Arabian English Show Hack JTR 14-18 CH</td> <td>SF/F</td> <td></td> <td></td> </tr> <tr> <td>2105 Arabian English Pleasure AAOTR 19-39 CH</td> <td>SF/F</td> <td></td> <td></td> </tr> <tr> <td>2223 Arabian Country English Pleasure JTR Select 13 &amp; Under CH</td> <td>SF/F</td> <td>1599 AHA/AA Working Hunter Cross Rail Walk/Trot 10 &amp; Under O/F CH</td> <td>A</td> </tr> <tr> <td>504 HA/AA Park Horse AAOTR CH</td> <td>SF/F</td> <td>1599 AHA/AA Working Hunter Cross Rail Walk/Trot 10 &amp; Under O/F CH</td> <td>B</td> </tr> <tr> <td></td> <td></td> <td>1599 AHA/AA Working Hunter Cross Rail Walk/Trot 10 &amp; Under CH</td> <td>C FNL</td> </tr> </tbody> </table>	CL#	SEC	CL#	SEC	154 Arabian Native Costume AAOTR CH	SF/F	2141 Arabian Hunter Hack JTR CH	SF/F	900 HA/AA Western Pleasure Walk/Trot 10 & Under CH	SF/F	767 HA/AA Hunter Hack CH	SF/F	2226 Arabian Hunter Pleasure JTR Select 14-18 CH	SF/F	2179 HA/AA Hunter Hack JTR CH	SF/F	2652 HA/AA Country English Pleasure AATR Elite CH	SF/F	361 Arabian Hunter Hack CH	SF/F	906 Arabian Hunter Pleasure Walk/Trot 10 & Under CH	SF/F	CROSS RAIL EXHIBITORS ONLY OPEN SCHOOLING Approx. 4:30-5:00		2148 HA/AA Country English Pleasure AAOTR 19-39 CH	SF/F			2140 Arabian English Show Hack JTR 14-18 CH	SF/F			2105 Arabian English Pleasure AAOTR 19-39 CH	SF/F			2223 Arabian Country English Pleasure JTR Select 13 & Under CH	SF/F	1599 AHA/AA Working Hunter Cross Rail Walk/Trot 10 & Under O/F CH	A	504 HA/AA Park Horse AAOTR CH	SF/F	1599 AHA/AA Working Hunter Cross Rail Walk/Trot 10 & Under O/F CH	B			1599 AHA/AA Working Hunter Cross Rail Walk/Trot 10 & Under CH	C FNL	<table border="1"> <thead> <tr> <th>CL#</th> <th>SEC</th> <th>CL#</th> <th>SEC</th> </tr> </thead> <tbody> <tr> <td>Classes 1184, 3197, 3198, 3199 will run concurrently with Pattern 11</td> <td></td> <td></td> <td></td> </tr> <tr> <td>1184 HA/AA Reining JTR CH</td> <td>FNL</td> <td></td> <td></td> </tr> <tr> <td>3197 HA/AA Reining Intermediate JTR CH</td> <td>FNL</td> <td></td> <td></td> </tr> <tr> <td>3198 HA/AA Reining Limited JTR CH</td> <td>FNL</td> <td></td> <td></td> </tr> <tr> <td>3199 HA/AA Reining Rookie JTR CH</td> <td>FNL</td> <td></td> <td></td> </tr> <tr> <td>390 AHA/AA Short Stirrup Reining 10 &amp; Under CH</td> <td>Pattern B</td> <td></td> <td></td> </tr> <tr> <td>2013 Arabian Reining JO TR 14-18 CH</td> <td>Pattern 4</td> <td></td> <td></td> </tr> <tr> <td>2012 Arabian Reining JO TR 13 &amp; Under CH</td> <td>Pattern 5</td> <td></td> <td></td> </tr> </tbody> </table>	CL#	SEC	CL#	SEC	Classes 1184, 3197, 3198, 3199 will run concurrently with Pattern 11				1184 HA/AA Reining JTR CH	FNL			3197 HA/AA Reining Intermediate JTR CH	FNL			3198 HA/AA Reining Limited JTR CH	FNL			3199 HA/AA Reining Rookie JTR CH	FNL			390 AHA/AA Short Stirrup Reining 10 & Under CH	Pattern B			2013 Arabian Reining JO TR 14-18 CH	Pattern 4			2012 Arabian Reining JO TR 13 & Under CH	Pattern 5		
CL#	SEC	CL#	SEC																																																																																		
154 Arabian Native Costume AAOTR CH	SF/F	2141 Arabian Hunter Hack JTR CH	SF/F																																																																																		
900 HA/AA Western Pleasure Walk/Trot 10 & Under CH	SF/F	767 HA/AA Hunter Hack CH	SF/F																																																																																		
2226 Arabian Hunter Pleasure JTR Select 14-18 CH	SF/F	2179 HA/AA Hunter Hack JTR CH	SF/F																																																																																		
2652 HA/AA Country English Pleasure AATR Elite CH	SF/F	361 Arabian Hunter Hack CH	SF/F																																																																																		
906 Arabian Hunter Pleasure Walk/Trot 10 & Under CH	SF/F	CROSS RAIL EXHIBITORS ONLY OPEN SCHOOLING Approx. 4:30-5:00																																																																																			
2148 HA/AA Country English Pleasure AAOTR 19-39 CH	SF/F																																																																																				
2140 Arabian English Show Hack JTR 14-18 CH	SF/F																																																																																				
2105 Arabian English Pleasure AAOTR 19-39 CH	SF/F																																																																																				
2223 Arabian Country English Pleasure JTR Select 13 & Under CH	SF/F	1599 AHA/AA Working Hunter Cross Rail Walk/Trot 10 & Under O/F CH	A																																																																																		
504 HA/AA Park Horse AAOTR CH	SF/F	1599 AHA/AA Working Hunter Cross Rail Walk/Trot 10 & Under O/F CH	B																																																																																		
		1599 AHA/AA Working Hunter Cross Rail Walk/Trot 10 & Under CH	C FNL																																																																																		
CL#	SEC	CL#	SEC																																																																																		
Classes 1184, 3197, 3198, 3199 will run concurrently with Pattern 11																																																																																					
1184 HA/AA Reining JTR CH	FNL																																																																																				
3197 HA/AA Reining Intermediate JTR CH	FNL																																																																																				
3198 HA/AA Reining Limited JTR CH	FNL																																																																																				
3199 HA/AA Reining Rookie JTR CH	FNL																																																																																				
390 AHA/AA Short Stirrup Reining 10 & Under CH	Pattern B																																																																																				
2013 Arabian Reining JO TR 14-18 CH	Pattern 4																																																																																				
2012 Arabian Reining JO TR 13 & Under CH	Pattern 5																																																																																				
JIM NORICK ARENA 8:00 AM	SPECIALTY ARENA - Approx 1:00 PM																																																																																				
<table border="1"> <thead> <tr> <th>CL#</th> <th>SEC</th> <th>CL#</th> <th>SEC</th> </tr> </thead> <tbody> <tr> <td colspan="4" style="text-align: center;">WEDNESDAY AFTERNOON</td> </tr> <tr> <td colspan="4" style="text-align: center;">PERFORMANCE ARENA Approx 1:00 PM</td> </tr> <tr> <td colspan="4" style="text-align: center;">WEDNESDAY EVENING</td> </tr> </tbody> </table>	CL#	SEC	CL#	SEC	WEDNESDAY AFTERNOON				PERFORMANCE ARENA Approx 1:00 PM				WEDNESDAY EVENING				<table border="1"> <thead> <tr> <th>CL#</th> <th>SEC</th> <th>CL#</th> <th>SEC</th> </tr> </thead> <tbody> <tr> <td colspan="4" style="text-align: center;">WEDNESDAY EVENING</td> </tr> </tbody> </table>	CL#	SEC	CL#	SEC	WEDNESDAY EVENING																																																															
CL#	SEC	CL#	SEC																																																																																		
WEDNESDAY AFTERNOON																																																																																					
PERFORMANCE ARENA Approx 1:00 PM																																																																																					
WEDNESDAY EVENING																																																																																					
CL#	SEC	CL#	SEC																																																																																		
WEDNESDAY EVENING																																																																																					

NO CLASSES

NO CLASSES

HUNTER SCHOOLING  
Estimate 7:00 to 9:00 PM

THURSDAY MORNING, July 23, 2020		SPECIALTY ARENA - 8:00 AM	
JIM NORICK ARENA 8:00 AM		PERFORMANCE ARENA 8:00 AM	
CL#	SEC	CL#	SEC
2151 H/A/A Country English Pleasure JOTR 14-18 CH	SF/F		
197 Arabian Western Pleasure JOTR 13 & Under CH	SF/F		
3152 H/A/A Western Pleasure AATR Ellie CH	SF/F		
2224 Arabian Country English Pleasure JTR Select 14-18 CH	SF/F		
740 H/A/A Hunter Pleasure JOTR 13 & Under CH	SF/F		
2123 Arabian Western Pleasure AAOTr 19-39 CH	SF/F		
2443 H/A/A English Pleasure JTR Select CH	SF/F		
914 H/A/A Western Seat Equitation Walk/Trot 10 & Under CH	SF/F		
112 Arabian Country English Pleasure Junior Horse CH	SF/F		
\$1,500 Available Sweepstakes Prize Money for those eligible			
CH - \$400			
RC - \$300			
TT - \$100			
<b>THURSDAY AFTERNOON</b>			
<b>JIM NORICK ARENA 1:00 PM</b>			
CL#	SEC		
96 Arabian Country English Pleasure CH	SF/F		
2228 Arabian Western Pleasure JTR Select 14-18 CH	SF/F		
2675 H/A/A Country English Pleasure JTR Select 13 & Under CH	SF/F		
316 Arabian English Show Hack CH	SF/F		
2543 H/A/A Ladies Side Saddle Western AATR CH	SF/F		
82 Arabian English Pleasure JOTR 13 & Under CH	SF/F		
516 H/A/A English Pleasure CH	SF/F		
191 Arabian Western Pleasure CH	SF/F		

THURSDAY MORNING, July 23, 2020		SPECIALTY ARENA - 8:00 AM	
JIM NORICK ARENA 8:00 AM		PERFORMANCE ARENA 8:00 AM	
CL#	SEC	CL#	SEC
1372 A/H/A/A Showmanship AATH CH	SF/F		
Classes 1648, 3187, 3188, 3189 will run concurrently with Pattern 11			
1648 Arabian Reining JTR CH	FNL		
3187 Arabian Reining Intermediate JTR CH	FNL		
3188 Arabian Reining Limited JTR CH	FNL		
3189 Arabian Reining Rookie JTR CH	FNL		
2016 H/A/A Raining JOTR 13 & Under CH	FNL		
2017 H/A/A Raining JOTR 14-18 CH	FNL		
2488 Arabian Performance Halter Geldings 3+ AATH			
2489 H/A/A Performance Halter Mares 3+ AATH			

THURSDAY MORNING, July 23, 2020		SPECIALTY ARENA - 8:00 AM	
JIM NORICK ARENA 8:00 AM		PERFORMANCE ARENA 8:00 AM	
CL#	SEC	CL#	SEC
2158 H/A/A Mounted Native Costume JOTR CH	SF/F	971 Arabian Breeders Sweepstakes Yearling Filly CH	SF/F
173 Arabian Ladies Side Saddle Western CH	SF/F	\$10,000 available to Sweepstakes enrolled Breeding Entries	
2181 Arabian Saddle Seat Equitation JTR 14-18 CH	SF/F	CH - \$2,500 RC - \$1,500 TT - \$750	
61 Arabian Park Horse CH	SF/F	974 H/A/A Breeders Sweepstakes Yearling Colt/Gelding CH	SF/F
996 A/H/A/A Freestyle Reining JTR EXHIBITION	SF/F	\$10,000 available to Sweepstakes enrolled Breeding Entries	
		CH - \$2,500 RC - \$1,500 TT - \$750	
<b>Yearling Sweepstakes horses may NOT cross enter in the open Yearling classes</b>			
		976 Arabian 2 Year old Fillies	SF/F
		\$2,000 Available Sweepstakes Prize Money for those eligible	
		CH - \$450 RC - \$350 TT - \$150	
		30 Arabian Gelding-In Hand AAOTr CH	SF/F

THURSDAY MORNING, July 23, 2020		SPECIALTY ARENA - 8:00 AM	
JIM NORICK ARENA 8:00 AM		PERFORMANCE ARENA 8:00 AM	
CL#	SEC	CL#	SEC
1608 A/H/A/A Working Hunter 14.2 & Under JTR O/F CH	A		
1608 A/H/A/A Working Hunter 14.2 & Under JTR O/F CH	B		
1608 A/H/A/A Working Hunter 14.2 & Under JTR U/S CH	C FNL		
330 Arabian Working Hunter JTR O/F CH	A		
330 Arabian Working Hunter JTR O/F CH	B		
330 Arabian Working Hunter JTR U/S CH (C/FNL)	C FNL		
1792 H/A/A Working Hunter AATR CH	A		
1792 H/A/A Working Hunter AATR CH	B		
1792 H/A/A Working Hunter AATR CH	C/FNL		
266 Arabian Working Hunter CH	A		
266 Arabian Working Hunter CH	B		
266 Arabian Working Hunter CH	C/FNL		
711 H/A/A Working Hunter CH	A		
711 H/A/A Working Hunter CH	B		
711 H/A/A Working Hunter CH	C/FNL		
2185 Arabian Hunter Seat Equitation Not to Jump JTR 14-18 CH	A		
2185 Arabian Hunter Seat Equitation Not to Jump JTR 14-18 CH	B		
1006 H/A/A Hunter Seat Equitation Not to Jump Walk/Trot 10 & Under CH	A		
1006 H/A/A Hunter Seat Equitation Not to Jump Walk/Trot 10 & Under CH	B		
944 Arabian Hunter Seat Equitation Not to Jump JTR 13 & Under CH	A		
944 Arabian Hunter Seat Equitation Not to Jump JTR 13 & Under CH	B		





SATURDAY MORNING, July 25, 2020			
JIM NORRICK ARENA 8:00 AM		SPECIALTY ARENA 8:00 AM	
CL#	SEC	CL#	SEC
294	Arabian Hunter Pleasure AAO/Tr 40 & Over CH	973	HAAA Breeders Sweepstakes Yearling Filly CH
2159	HAAA Ladies Side Saddle English JTR CH		\$10,000 available to Sweepstakes enrolled Breeding Entries
896	Arabian Country English Pleasure Walk/Trot 10 & Under CH		CH - \$2,500 RC - \$1,500 TT - \$750
734	HAAA Hunter Pleasure CH		<b>Yearling Sweepstakes horses may NOT cross enter in the open Yearling classes</b>
1172	HAAA Country English Pleasure AATR Select CH	3091	Arabian Yearling Fillies Open CH
2106	Arabian English Pleasure JOTR 14-18 CH	3113	HAAA Mare Breeding 3 & Over JTH CH
2171	HAAA Hunter Pleasure AAO/Tr 19-39 CH	2100	Arabian Mare Breeding JOTH CH
1945	Arabian Western Pleasure JTR Choice CH	3112	HAAA Gelding In-Hand AAO/TH CH
		18	Arabian Stallion Breeding AAO/TH CH
		3110	Arabian Yearling Colts/Geldings Open CH

SATURDAY AFTERNOON			
JIM NORRICK ARENA 1:00 PM		SPECIALTY ARENA 1:00 PM	
CL#	SEC	CL#	SEC
2118	Arabian Country Pleasure Driving JTD CH	2085	HAAA Yearling Colts/Geldings Open CH
159	Arabian Mounted Native Costume JTR 13 & Under CH	874	Arabian 2 Year Old Colts
3147	HAAA Western Pleasure JTR Elite CH		\$2,000 Available Sweepstakes Prize Money for those eligible
2004	HAAA Lead Line 2-6 Year Old EXHIBITION		CH - \$450 RC - \$350 TT - \$150
548	HAAA Country English Pleasure JOTR 13 & Under CH	3111	HAAA Mare Breeding AAO/TH CH
2986	HAAA Hunter Pleasure JTR Select 14-18 CH	2102	Arabian Gelding In-Hand 3 & Over JOTH CH
2960	HAAA Hunter Pleasure AATR Choice CH	451	HAAA Gelding In-Hand 3 & Over CH
2247	Arabian Hunter Pleasure JTR Elite CH	15	Arabian Stallion Breeding CH

SATURDAY EVENING			
JIM NORRICK ARENA 7:00 PM		SPECIALTY ARENA	
CL#	SEC	CL#	SEC
2101	Arabian Mare Breeding 3 & Over JTH CH	1358	A/HAAA Hunter Seat Equitation Not to Jump AATR CH
621	HAAA Western Pleasure CH	2186	HAAA Hunter Seat Equitation Not to Jump JTR 14-18 CH
1847	Arabian Country English Pleasure JTR Elite CH	944	Arabian Hunter Seat Equitation Not to Jump JTR 13 & Under CH
1947	Arabian Western Pleasure JTR Elite CH	1006	HAAA Hunter Seat Equitation Not to Jump Walk/Trot 10 & Under CH
2142	HAAA Park Horse JTR CH		
541	HAAA Country English Pleasure CH		



**GENERAL RULES & INFORMATION  
PLEASE REFER TO GENERAL RULES  
FOR ALL SHOWS**

**FOR ALL OWNERS, TRAINERS AND  
COMPETITORS 18 & OVER**

**ATTENTION  
COMPETITORS**

**USEF SAFE SPORT TRAINING REQUIREMENT**

Starting January 1, 2019, if you are a USEF Competing Member 18 years of age or older you are required to complete the core Safe Sport Training within 30 days of activating your membership.

If you do not complete the training, you are ineligible to participate in all USEF activities including competitions.

TAKE the SAFE SPORT TRAINING at USEF.org by logging into your member dashboard.

#youarenotalone

**SAFE SPORT**

**ENTRIES**

Fees are in US funds. All entries must be paid in full when submitted. Blank checks sent with an entry will be filled out by the AHA office for the amount due. Checks drawn on Canadian banks must be from a US account or preprinted with "US Funds".

See "Entry Information" in the General Rules for what is considered a complete entry. All entries must be complete or they will be returned. If the returned entry form is not completed and received by the closing date, it will be considered a post entry.

Online entry for the Championship Show will be available until midnight (MT) June 23, 2020. Online entry for the Experience AHA Youth Nationals classes is not available and must sent to AHA and be on the separate entry form for Experience AHA Youth Nationals.

**Entries for Youth and Mid Summer Nationals after June 23 Accepted by Petition Only subject to approval. All Post entry fees will apply.**

For hard copy entries either fax, mail or email your entries – DO NOT submit your entry by more than one method or your credit card may get charged twice.

Faxed entries MUST include a cover sheet listing all entries and number of pages in the fax.

**Exhibitors are advised to use a form of expedited, traceable mail service when sending entries in order to ensure that their entries are received.**

If you email your entries, please contact AHA if you do NOT get a return email acknowledging the receipt of your entry on the same or next business day.

**Mail to: Attn: Youth & Mid Summer Nationals**  
10805 East Bethany Drive, Aurora, CO 80014  
Fax to: 303-696-4599  
Email to: NationalEvents@ArabianHorses.org

**HORSES NOT ENTERED IN THE SHOW**

Non-competing horses must:

1. Fill out the official entry form and the box for "Non-Competing" must be checked
2. Pay for a stall, office fee plus a \$100 fee.
3. Sign the back of the entry form in all mandatory places.
4. Send Full payment with the entry form.
5. Be listed on Stabling Request form

A non-competing horse that ultimately enters the show will be considered a Post Entry and must be submitted by the final closing date. There will be a \$750.00 fine per horse for not filing an official entry form with the show office.

**UNREGISTERED HORSES**

All Horses must have a certificate of registration when entering any National Show. Pending registrations must be completed by the closing date of each National show or a post entry fee will be charged.

**ENTRY REFUNDS**

Please refer to the General Rules for all shows

**POST ENTRIES**

SEE PAGE 25 FOR DEADLINES. Post entries may not be listed in the program and may not be stalled with horses from the same barn. Remember there is no such thing as re-qualifying.

**SHOW ACCOUNTS**

All exhibitors will be required to leave an open check or credit card, **separate from their entries** at check-in, before show numbers will be released, to cover early arrival, additional stalls, fines or penalties incurred at the show.

All open accounts must be closed before the closing of the Show Office, Saturday July, 25. Management will close all show accounts not closed out by the end of the show will be assessed a Failure to Close Out fee of \$100.

**Exhibitors are encouraged to close out their account in person. Exhibitors who do not close out in person automatically authorize Management to close their account using the Check or Credit card on file. Billing questions will NOT be considered.**

**RIDER/HANDLER EQUITATION HORSE CHANGES**

Change fee will be assessed if change is not filed or is late. All changes must be made at least one session prior to the class with the involved.

Once a class section has run, rider changes will not be accepted. Please refer to General Rules for all shows.

The order of go in all equitation classes is random.

If there is a change of Equitation horse after the order of go has been posted, the exhibitor with the change will be moved to the first go. UPHA rules EQ 118.17.4 the SAME horse must be used for BOTH phases except with a vet certificate

## SECTION REQUESTS

SECTIONS WILL BE POSTED BY THE SHOW OFFICE ONE DAY AHEAD OF THE SCHEDULED CLASS.

Section Requests can be made on the Official Entry Form when submitting the initial entry to the show or they can be done at the show. Section requests submitted at the show must be in to the show office by Noon the day prior to when the sections are to be posted. i.e if the class is Tuesday, sections will be posted Monday, Section requests must be in by noon Sunday.

Exhibitors can request a GO FORWARD section AFTER they make the cut in the preliminary section. The request MUST be submitted to the show office within 30 minutes after the session the elimination sections were held. (Example: 30 minutes after the completion of the session when the I, II, III cuts were held is the deadline to submit section A & B requests)

Once a class has been sectioned refer to the General Rules under the Class Information section for Section Changes.

## SCRATCHES & NO SHOWS

All Scratches MUST be done in writing and turned into the show office before the end of the session prior. Failure to file an official scratch (no show) in the show office will result in a fine.

Exhibitors who scratch at the gate and do not file an official scratch by the end of the session the class is in will be charged either the scratch fee or the no show fee. Scratches taking place once the session starts will be assessed the late scratch fee.

## SHOWING A NON-QUALIFIED HORSE/CLASS

At check in, all non-qualified horses and classes will be verified for the final time. If AHA is not able to verify qualifications, a non-qualified form must be filled out and on file in the show office. In the event an unqualified horse is shown in a class and a non-qualification declaration form is on file, the exhibitor will be charged a \$500 fee.

## STALLIONS

Stallions are prohibited from being exhibited in Showmanship, Walk/Trot-Jog and Lead Line classes.

## ARENA SIGNS

Arena signage may be purchased using the form included in this Prize List. Arena signage space is limited and will be sold on a first come, first served basis. AHA will produce the arena signs as follows: one 3' x 4' sign, in the arena of your choice.

Artwork for the signs must be emailed to NationalEvents@arabianhorses.org or mailed on CD to AHA by June 1, Artwork must be in .jpg or .png format. AHA is not liable for exact color match. Artwork must be laid out so that it will fit on a 3' x 4' horizontal sign. Please see the form and call AHA at (303) 696-4500 for more information or questions.

## AWARDS

Please refer to General Rules "AWARDS" for complete information.

Awards room will be open from July 16-25 from 8 AM until 30 minutes after classes end.

All awards not claimed by the close of the show will be forfeited with no exceptions. No awards will be mailed.

Duplicate Awards will be for sale in the Awards Room. Champion Trophy and Reserve Champion Trophy, and Top Ten Plaques.

## JACKETS & BUCKLES

Each exhibitor will be awarded only one Championship jacket or belt-buckle per Youth National show. For example, should a rider receive 3 Championship titles, the rider will only be awarded one jacket or one buckle for the first Championship title earned.

Any exhibitor who earns more than one Championship title has the opportunity to purchase additional jackets and/or buckles. Additional buckles may be purchased from the Awards Room during the show, or from the AHA Office once the show has ended.

Additional jackets and patches may be purchased from Awards Recognition Concepts.

## CAMPER & RECREATIONAL VEHICLE FACILITIES

A large RV park with water, electricity and sewer station is located on the Fairgrounds (both 50 amp and 30 amp services). For more information, call the Oklahoma State Fairground Office at (405) 948-6700. Camper space must be reserved directly from the Fairground. No motor homes, travel trailers, campers or other RV's may park in the Fairground's parking lots or on the roads of the Fairgrounds. The nightly rate is \$25 per night.

Premium VIP Motor Home and Camper Spots are available directly on the show grounds in the VIP lot at the north end of Barn 9 close to all arenas and barns. The lot is paved and each site has full hook-up including power, sewer and water (50 amp). Reservations will be accepted on a first-come, first-serve basis on the enclosed form. The reservation form is also located on the website at [www.arabianhorses.org/YNL](http://www.arabianhorses.org/YNL). Please contact National Events at [nationalevents@ArabianHorses.org](mailto:nationalevents@ArabianHorses.org) or call (303) 696-4553

## CLASS INFORMATION & SPECS

When entering, please be aware of entering classes which might run in different rings at the same time. Every effort will be made to solve these conflicts, however rings will not be held for extensive periods to solve conflicts. Entry fees will be forfeited in case of time conflicts caused by two rings running simultaneously that can't be resolved. If Sections listed in the tentative schedule are canceled, the SFF maybe moved to run where the sections were scheduled for that class.

If Classes with no sections scheduled have to be divided, the sections will run in place of the SFF and the SFF, if possible, will be moved later in the week.

## CLASS SECTION REQUESTS

**Sections will be posted by the show office one day ahead of the scheduled class.**

Section Requests can be made on the Official Entry Form when submitting the initial entry to the show or they can be done at the show. **Section requests submitted at the show must be in to the show office by Noon the day prior to when the sections are to be posted. i.e if the class is Tuesday, sections will be posted Monday, Section requests must be in by noon Sunday.**

Exhibitors can request a GO FORWARD section AFTER they make the cut in the preliminary section. The request MUST be submitted to the show office within 1/2 hour after the session the elimination sections were held. (Example: 30 minutes after the completion of the session when the I, II, III cuts were held is the deadline to submit section A & B requests)

Once a class has been sectioned refer to the General Rules under the Class Information section for Section Changes.

**BREEDING/GELDING IN-HAND CLASSES**

All Breeding/Gelding In-Hand classes will be judged comparatively using the Majority Opinion System (MOS).

Controlled paddock procedures in the General Rules for all National shows will be followed and strictly enforced by the Youth National Show Commission. Those in violation will be removed from the paddock.

Horses must be enrolled as a Breeding Entry in order to participate in the ABS Yearling Classes. Yearling Sweepstakes horses may NOT cross enter into the Yearling open classes.

**WESTERN DRESSAGE/DRESSAGE CLASSES**

Qualifications are required for Western Dressage for 2020.

Intro is 1 Pt. or 1 score of 55

Basic is 2 Pt. or 2 scores of 58

Tests will be as follows:

- » USDF Introductory Dressage Test B
- » Training Level Test 3
- » First Level Test 3
- » Second Level Test 3
- » Third Level Test 3
- » Western Dressage Intro Test 4
- » Western Dressage Basic Test 4

Only one ride will be used to determine Champion, Reserve Champion and Top Ten. Readers are only allowed in Introductory Level. For Reader exception see DR 122.4 and Handicapped & Electronic Communication Devices in the General Rules.

No Whips Allowed, exception Western Dressage.

Dressage Award Presentations will be held after the last dressage classes each day.

Western Dressage will be held in a short court (20 x 40 Meters).

**DRESSAGE HELMET RULE**

When cross entry by rider or horse/rider combination is permitted between Dressage and other Arabian classes at a competition, DR120 and DR121 apply only to the designated Dressage warm up and competition areas, or when an exhibitor is actually warming up for Dressage classes.

**EQUITATION CLASSES**

For Equitation qualifications, please refer to the current AHA Handbook, COMP 1212.

**DRESSAGE SEAT EQUITATION**

In addition to rail work, all contestants are required to perform three or more individual tests from USEF DR133.

**HUNT SEAT EQUITATION**

Refer to USEF EQ 107 for class routine, faults & eliminations.

**NOT TO JUMP**

Will have a rail work portion and also each competitor will be asked to perform two or more tests from USEF EQ 112 Test 1-5, 7-8, 10-17. Judges must work competitors in groups of twenty (20) or less. Exhibitors will be excused from the ring following rail work and will perform their tests individually.

**OVER OBSTACLES**

Course will be posted 24 hours prior to class.

Fence heights are 2'9". This class will follow the procedures outlined in the USEF EQ-2. All competitors will compete over the Hunt Seat Equitation course and then the top four competitors from each judge's card will be required to perform two or more tests from USEF EQ 112, Test 1-17, as designated by the call judge.

**REINING SEAT EQUITATION**

All Reining Seat Equitation classes will have (1) one go round.

**UPHA ARABIAN BREEDS CHALLENGE CUP**

UPHA winners receive awards provided by UPHA.

All UPHA riders must be a current UPHA Member at the time they qualify.

Per EQ 117.15.4, the same horse must be used in both Phases of the class, unless the horse is sick or lame, and in this case, a veterinarian certificate from the official show veterinarian is required.

All UPHA Arabian Breeds Challenge Cup class entries must be qualified seven days prior to the beginning of the show. Qualifications earned after 7 days prior to the start of the show, will count for the next year – UPHA rules refer to USEF EQ 117.15

For the 14-18 and the 13 & under classes, in Phase I, all contestants must work as a group (or in groups) of twenty (20) or less on the rail and complete an individual workout. A minimum of twelve (12) and no more than fourteen (14) riders will be chosen for Phase II, which is the Finals Section. No predetermined number need be selected from each group.

In the UPHA 10 & Under Walk/Trot class, the riders will work as a group (or in groups) of twelve (12) or less. There will be no individual workout. Ten (10) riders will be chosen to return for Phase II, which is the Finals Section.

For UPHA questions regarding rules or qualifications, refer to the USEF rule book EQ 117.15 or contact UPHA at (859) 231-5070, info@uphaonline.com.

**LEAD LINE EXHIBITION CLASS**

Lead Line classes are open to riders 2 through 6 years of age. Age of rider will be determined by using the age of the child as of December 1, 2019. Lead Line riders may not cross enter into any other class in the show. Riders/trainers/owners in Lead Line classes are exempt from AHA/USEF membership if the horse entered is not entered in any other class in the show.

The Lead Line classes will be exhibition classes only. All participants will receive a specially designed trophy and ribbon.

Please sign up for this class on the entry form. Post entries will be accepted at the show office up to one day prior to the class. Leaders must be at least 14 years of age. Leaders are to walk on the near side of the horse. (Res. 27-97)

## SELECT, CHOICE & ELITE JTR & AATR CLASSES

If a competitor is eligible to compete as a Select/Choice/Elite Rider in a section on December 1, 2019, said eligibility remains throughout the current competition year.

### Achievement Level Riders

1. MAY level up to a higher level (USEF AR110.2.g), **But rider may only ride 1 level**, on the same horse. i.e. A Choice Western Pleasure rider may level up to Western Pleasure Elite, but can't ride both Choice & Elite Western Pleasure. Rider may level up on a different horse.

2. May Cross enter into JOTR & AAOTR classes

The following are the leveling classes held at Youth Nationals for both Arabian and Half-Arabian/Anglo-Arabian;

1. Western Pleasure & AATR – Classes that count toward Leveling in Western Pleasure are;
  - a. Western Pleasure
  - b. Western Horsemanship/Equitation
2. Hunter Pleasure JTR & AATR – Classes that count toward Leveling in Hunter Pleasure are;
  - a. Hunter Pleasure
  - b. Hunter Seat Equitation Not to Jump
3. English and Country English Pleasure JTR & AATR – Classes that count toward Leveling in English and Country English Pleasure (Saddle Seat) are;
  - a. Park
  - b. English
  - c. Country English
  - d. Saddle Seat Equitation
  - e. Show Hack
1. English Trail – Classes that count toward Leveling in English Trail are;
  - a. English Trail
2. Western Trail – Classes that count toward Leveling in Western Trail are;
  - a. Western Trail

Select Western Trail JTR Riders MAY cross enter into JOTR or JTR Western Trail Class and English Trail.

## SPORT HORSE IN-HAND CLASSES

To help avoid conflicts with other rings, once the number of go's has been determined, there will be a signup sheet with time frames for each class in the office. If you do not sign up by Noon the day prior to your scheduled class, a go order will be assigned to you.

There is an order of go for in-hand classes. The Order of Go will be definite, but the times listed are approximate. In the event of a conflict with other rings, management will work with exhibitors within the time frame for each class as much as possible.

All Sport Horse In-Hand classes will utilize the "Triangle" method of presenting their horses to the judges. The classes may be conducted using a proportionally smaller triangle.

## WALK/TROT/JOG 10 & UNDER CLASSES

Open to Exhibitors 10 years old and under as of December 1, 2019. Stallions are prohibited.

## WORKING HUNTER CLASSES

Patterns will be posted 24 hrs in advance

A \$25 per horse obstacle fee is required for each horse entered in a class that requires a fence.

Working Hunter Championship classes will be judged using AHA Score Cards and will follow the procedures outlined in the AHA Handbook.

Working Hunter Championships have two jumping classes (A, B) followed by an under saddle class (C) that is the Final. Riders may not be different from class to class (A, B and C). Exception:

In the Working Hunter JTR.AATR and AOTR Championship, if an owner or Amateur is showing more than one horse, for the under saddle class please reference USEF HU 137.4 for AAOTR and USEF HU 138.3 for ATR.

The substitute rider must be in the same age range. i.e for the W/T 10 & Under Cross Rail the substitute rider must be 10 or under.

All horses can compete in both jumping rounds; however this is not a requirement.

The first order of go shall be drawn. Riders may be permitted to ride back-to-back rounds at their discretion.

A rider may be permitted to compete out of order to minimize delays, but must be approved by management.

Only the ten highest scoring horses from each round (or 50% of each section if fewer than 20 horses) will advance to the under saddle Final round (after being jogged for soundness).

## WORKING HUNTER CLASSES

Working Hunter JTR AATR fence heights are 2'6"

AOTR fence heights are 2'9"

Open fence heights are 3'

## HUNTER HACK CLASSES

The fences will be set at 2'3" Hunter Hack Championship classes will follow the procedures outlined in the AHA Handbook COMP 810.

## WORKING HUNTER 14.2 & UNDER CH

This class is open to any 14.2 and under working hunter. Fence heights are 2'3"

## WALK/TROT CROSS RAIL

Fence not to exceed 18"

## HUNTER WARM UP/SCHOOLING

One Hunter warm up round of \$30 is included with each Working Hunter class and will precede your judged round. Warm Up round fees are non-refundable.

The Working Hunter open schooling time is scheduled for Wednesday, July 24 in the Specialty Arena. No sign up or fee required.

No horses will be allowed to participate that are not entered in Working Hunter or Hunt Seat Equitation Over Obstacles classes.

Trainers and riders will be allowed to ride the horse during the open schooling.

Protective Headgear must be worn in both the open schooling ring, in the paddock and other schooling areas designated for Working Hunter/Hunt Seat Equitation Over Obstacles horses.

A Jump obstacle fee of \$25 per class is included with Working Hunter, Hunter Hack and Hunt Seat Equitation Over Obstacles classes.

## WORKING WESTERN CLASSES

Order of go will be by random draw as outlined in Arabian Division of the USEF rulebook.

**FREESTYLE REINING (EXHIBITION)**

Freestyle reining will have 1 go. The class will be run and judged in accordance with the current USEF Rule Book. Time limit is 3½ minutes per horse.

Champion and Reserve Champion will receive an award designated by Show Management. In case of a tie, the number one judge's score will break the tie. If still tied, the number two judge will break the tie.

No qualifications are required. Entries will be limited to ten (10). Ten (10) slots will be filled based on the oldest to youngest exhibitor and postmarked date. Remaining entires will be put on a waiting list in the event there is a cancellation of one of the 10 accepted rides.

**RANCH HORSE RIDING**

**Ranch Horse Riding will have 1 go.**

REFER TO USEF AR 221. The purpose of Ranch Horse Riding should reflect the versatility, attitude, and movement of a working horse. The horse's performance should simulate a horse working outside the confines of an arena and that of a working ranch horse. This class should show the horse's ability to work at a forward, working speed while under control by the rider. Light contact should be rewarded and horse shall not be shown on a full drape of reins. The overall manners and responsiveness of the horse while performing the maneuver requirements and the horse's quality of movement are the primary considerations. For rules regarding correct Western appointments, refer to AR 144.

**TRAIL, REINING & SHORT STIRRUP REINING**

All entries will compete in two go rounds. Champion, Reserve Champion and Top Ten will be determined by the cumulative score of both go rounds.

Each Horse entered in Trail is required to pay a \$25 obstacle fee.

**REINED COW HORSE**

Reined and Limited Reined Cow classes will have 1 go.

Entries to be shown and judged under the class specifications set forth in the Arabian division of the USEF rule book. Refer to USEF AR 216 for class procedures.

**Limited Reined Cow Horse** introduces the rider to the boxing phase of the cow work.

Riders may not have gone down the fence in any judged class(es) or event(s) with the exception of horse sales. Being entered in a class that includes the fence work will be counted as going down the fence regardless if the rider boxed the cow and pulled up before the run was completed.

**HERD WORK**

Herd Work classes will have 1 go.

Entries to be shown and judged under the class specifications set forth in the NRCHA Rule Book.

**WORKING WESTERN WARM UPS & COW PRACTICE**

Back numbers must be worn.

You no longer need to sign up in the show office!

The total fee for each trail class includes a trail warm up for Saturday and Sunday.

The total fee for each class requiring a cow will include the cattle fee has been graciously donated for 2020. A practice for 5 min (1 cow) will be included in the entry fee.

**AWPA ARABIAN HORSE TIMES \$15,000 ARABIAN AAOTR MATURITY & AWP EQUINE ATHLETE \$15,000 HALF-ARABIAN AAOTR MATURITY**

For complete rules, deadlines and information on eligibility please visit the AWP web site at <http://arabianwesternpleasure.com>

The AWP Arabian and Half-Arabian Western Pleasure AAOTR Maturities are held this year at the Mid Summer National Arabian Horse Show. Prize money is determined by the AWP. AHA will award a National Champion, Reserve National Champion, and 8 Top Tens in the AWP Maturity Classes.

The classes are open to Adult Amateur Owner riders only. Four and five year old Purebred and Half-Arabian horses who are sired by a 2020 AWP nominated stallion. The stallion must have been enrolled with the AWP in 2020 for foals to be eligible. However, if the stallion only provided one breeding in the Auction, then only those type of foals are eligible. For example, if a stallion only offered a Purebred breeding, then only Purebred foals will be allowed to compete.

To participate in the AWP Futurities, the owner or agent MUST complete the AWP Entry form, and provide payment, on the AWP website. They MUST also fill out and enter the show on the official AHA entry form. This includes paying all Canadian Nationals fees, including a separate class entry fee.

An AWP representative may choose to meet with the riders at the Canadian National Show prior to one or both sections of the Maturity class. During this meeting the AWP representative will advise the riders of class procedures, rules, and how the horses are to be presented.

**AWPA CLASS GUIDELINES**

Entries will be shown and judged under the class specifications set forth in the Arabian Division of the Equestrian Canada Rule Book for Western Pleasure Junior Horses, with a change in order of judging criteria listed below. Entries must be shown in a snaffle bit or hackamore

A five judge total points system will be used. Judges will be drawn randomly from the U.S. Nationals judging panels. Quality is the number one criteria for judging, followed by performance, suitability, and manners.

Each Judges placing will be ranked and points applied according to the following table:

1st = 40	2nd = 36	3rd = 28
4th = 24	5th = 20	6th = 16
7th = 12	8th = 10	9th = 8
10th = 6	11th or any Reserve = 0	

Class eliminations will be run as standard Western Pleasure Junior Horse classes. Entries will be shown at a walk, jog and lope both directions of the ring. Fourteen (14) horses total will advance to the final. (Example: If the number of entries require two sections of eliminations be run (Section A and Section B), 7 horses from Section A and 7 horses from section B will advance to the final)

**AWPA Futurity Finals Class Procedure:**

Phase 1. Rail Work (80% of judging OR score)

Horses will be shown at a walk, jog and lope both directions of the ring. Judging criteria will be in this order: quality, performance, suitability, and manners. After completion of the rail work, exhibitors will be asked to line up head to tail, split evenly by numbers on either long side of the arena.



## Phase 2. The Stand Up (20% of judging OR score)

Once all horses are in line, two attendants per horse will be allowed into the arena to assist with removing saddles and pads. They are allowed to bring a saddle rack, towel, and brush. They are not allowed to show the horse during judging.

Riders are to stand up their horse to be assessed for quality by the judges. The horses shall stand relaxed with weight evenly dispersed on all four feet (not stretched). Whips may not be used. Once the judging panel has completed their examination of your horse, it should then be re-saddled. After all horses have been re-tacked, riders will be asked to remount and attendants will be excused from the ring.

## Phase 3. Placing and Awards

Exhibitors will be retired to the paddock after the judges turn in their cards. The Top Ten will then be called back into the ring in numerical order. The Reserve Champion and then the Champion will be placed and given their awards. The horses will leave the arena in reverse order of their placings (tenth place first and Champion last). As they exit, the prize money won by each will be announced.

## EXPERIENCE AHYA

- Must fill out the Experience AHYA entry form and mail , email or fax it to AHA
- **NEW FOR 2020**  
**The exhibitor that is entered in Experience AHA classes may NOT enter into any the classes at the Youth National Championship show. The horse MAY be entered in both the Youth Nationals Championship Show and the Experience AHA classes with different exhibitors.**
- The horse must be an Arabian, Half-Arabian or Anglo-Arabian.
- Rider must be an AHYA member, a competition card is NOT required.
- USEF membership is not required for rider.
- USEF membership is not required for either the owner or trainer IF the horse is only entered in the Experience classes.
- The show commission reserves the right to combine or divide classes.
- The entry fee is \$35 and limited to the first 18 entries in each class.
- The horse must have a stall and pay the mandatory fees at YNL.
- Neck ribbons will be awarded to 5 places. No trophies will be awarded.
- Will be judged by 1 judge.
- Neither the horse nor the exhibitors will earn points in any AHA or USEF program.
- Entries close June 24 (postmark or electronically dated).
- Entries received after June 24, will be charged a one time late fee of \$50 per horse.
- No additional new horses will be accepted after July 14, 5 PM.
- Horses entered by the final close (July 14) may enter additional classes until Saturday July 18, 5 PM @ \$35 per class.
- If a non-competing horse is ultimately entered in Experience AYHA classes, all fees paid will be transferred.
- Check AHA web site for more details.

## COMPETITION ARENAS

The following table specifies the dimensions and footing of the competition arenas:

### ARENA: DIMENSIONS FOOTING

- » Norick Arena (located in the Superbarn) 120' x 250'
- » Red Sandy loam
- » Performance Arena 120' x 250'

- » Sandy loam
- » Specialty Arena (Barn 8) 130' x 255'
- » Sandy loam

## WARM UP RINGS

- » Superbarn - 100' x 220'
- » Barn 3 - 200' x 80'
- » Barn 7 - Two 80'x 170' warm up rings
- » Outdoor Covered Arena 100' x 200'
- » West Outdoor Covered Arena 100' x 400'
- » Lunging arenas – 10 dedicated 63' round pens

When classes are in session, the only horses allowed in the paddock/warm up arenas are the horses in the next class.

## DOGS

No dogs will be allowed in the main arena or paddock area with the exception of Companion/Guide Dogs, and in accordance with USEF Chapter 13 (sub-chapter 13a, GR1301 General 6). Dogs are not permitted to be loose on competition grounds and must be held on a leash or otherwise restrained. Individuals must not lead dogs on a leash while mounted. Dog owners are solely responsible for any damages, claims, losses or actions resulting from their dogs' behaviors. Dog owners failing to comply with this rule will be issued a Yellow warning card and may be subject to penalty under Chapters 6 and 7. The Show Management further reserves the right to fine any exhibitor or farm whose dog is running loose and has to be confined by show officials. The first offense will be up to \$50 and the second offense will be up to \$100 and expulsion of the animal from the show grounds.

No animal other than horses, dogs or cats are allowed on the show grounds without the express written consent of the National Show Commission.

## FIRE MARSHAL REGULATIONS

- » NO plastic or vinyl material in the barns, covering for stalls, or used for temporary security of retail vendor booths.
- » NO TWO CONTINUOUS STALLS PER AISLE - CAN BE COVERED AT ANY TIME.
- » Sleeping areas are to be equipped with a smoke detector and fire extinguisher.
- » Only stalls for tack storage, entertainment or resting can be covered on the top, and will require a working smoke detector.
- » Stalls can only be covered in a red rosin construction grade paper or (butcher block paper), cheesecloth, either regular or restaurant type grade. Wood strapping – 3' max. on center to attach paper is allowed. Any stalls that are covered containing electrical appliances, (refrigerator, microwave, coffee pots) are required to have an operating smoke detector.
- » Stalls can be built out 4 feet with awnings/floor decorations
- » Movable objects such as chairs can be out another 2 ft
- » No portable heaters/air conditioners of any type are allowed in the Oklahoma City Fairgrounds livestock facilities.
- » Any aisle space between stalls can be covered only if equal open space to material does not exceed four (4) feet. If your material is maximum 4 feet, then the open space between the materials must be a minimum of 4 feet.
- » No tents or canopies are allowed inside the barns, arena, or livestock areas. This includes, but is not limited to, EZ-UP pop up tents.
- » NO SMOKING is permitted in any arenas or barns.
- » No hay, straw, shavings, or similar combustible materials used for decorations are permitted within any facility unless they have been treated in ACCORDANCE WITH NFPA 701 to make them flame retardant and a certificate or similar

proof is supplied to the OKC Fire Marshal's Office prior to its placing. (Hay or straw for feed and bedding of animals can be kept in stall areas)

- » Combustible trash must be removed at least once a day.
- » Combustible storefront elevations shall be treated in ACCORDANCE WITH THE NFPA 701 to make them flame retardant and certificate or similar proof is supplied to the Oklahoma City Fire Marshal's Office prior to it placing. Material that is being treated by user must be done in the presence of an inspector from the City of Oklahoma City Fire Marshal's Office.

**FORMAL NIGHT**

Formal night is designated for Saturday, July 25.

**MOTORIZED VEHICLE/GOLF CART PERMITS**

Please check the AHA web site for further details regarding the golf cart vendor.

Please refer to USEF Rule Gr1301.7 regarding the motorized vehicles, including golf carts, motorcycles, scooters or other farm utility vehicles by minors.

**MUSIC - EQUITATION & FREESTYLE REINING**

Exhibitors in Equitation and Freestyle Reining classes will be allowed to submit their own music selection for their pattern work in the Semi-finals/Finals section only. UPHA classes allow music for phase I only.

Music requests with the name of the song and artist must be submitted on the Equitation Music form to the Show Office at least one day prior to the session in which the Semi-final/Final is held.

No music will be accepted once the session has started.

It is the responsibility of the exhibitor to pick up their music after the Finals class.

**PARKING INFORMATION**

There is NO charge for entrance onto the grounds or for parking.

Designated lots will be marked for Patrons, Judges and Officials. You must have a Parking tag for these lots or your vehicle will be towed.

Parking is not allowed in any fire lanes or any barn areas.

**QUALIFICATIONS**

Please refer to the General Rules

**Any class can be entered by the closing date (qualified or not). Qualifications for classes not qualified for by the closing date can be earned up to the start of the show. You are qualified from the earliest date you earn the points required. There is no such thing as re-qualifying.**

**SCHEDULE AND RING CONFLICTS**

**When entering, please be aware of entering classes which might run in different rings at the same time. Every effort will be made to solve these conflicts, however rings will not be held for extensive periods to solve conflicts. Entry fees will be forfeited in case of time conflicts caused by two rings running simultaneously that can't be resolved.**

It is the policy Youth Nationals Show Commission to not make schedule changes within 24 hours of a class, unless there are extenuating circumstances. No classes will be moved in the schedule once the Omnibus is printed other than sections may be added or cancelled if entries warrant.

If Sections listed in the tentative schedule are canceled, the SFF maybe moved to run where the sections were scheduled for that class.

If Classes with no sections scheduled have to be divided, the sections will run in place of the SFF and the SFF, if possible, will be moved later in the week.

**Sections will be posted one day ahead of the scheduled class.**

**The above policy applies to the Mid Summer Nationals**

**SCORING SYSTEM**

MOS will be used for all classes except Sport Horse In-Hand, Dressage, Dressage and Reining Seat Equitation, and Working Western. All Breeding/Gelding In-Hand classes will be judged comparatively using the Majority Opinion System (MOS).

**SEATING**

Certain box seating areas are designated for Patron, VIP or Judge seating only.

# Mark Your Calendar

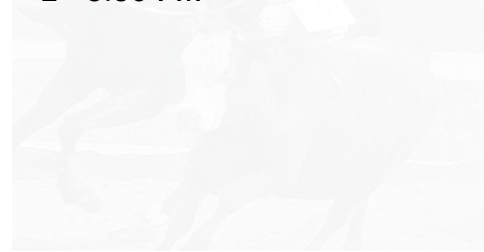
Tuesday, July 14, 2020

## Announcing the 17th Annual Arabian Professional & Amateur Horsemen's Association Youth Nationals Clinics

With Stan Morey, AHA Judges & Stewards Commissioner

### COLBY POWELL RANCH RIDING

In the Performance Arena  
2 - 3:30 PM



## **STABLING/FEED & BEDDING**

Exhibitors will be financially responsible for any alteration/damage to their stalls on the premises.

Removal of Stall Panel (per Panel/Stall). . . . .Varies up to \$500

Wednesday, June 24

In-House/Electronically Dated. . . . . Group Stabling Requests Due

Saturday, July 11 . . . . . NO Arrivals before noon

Sunday July 26, by Midnight. . . . . Stalls must be vacated

**\*NO EXCEPTIONS.**

All stall fees must be paid in full at the time of entry as follows:

- » \$250 per stall (12X12) (horse or tack)
- » One paid stall per entered horse, all others are considered tack stalls. No subletting of stalls will be allowed.
- » When ordering just tack stalls, please use an entry form leaving the horse information blank. Please list the tack stalls on the stall reservation form as well.

**ALL Non-Competing horses must be listed on the stall Reservation form.**

**There will be a \$750.00 fine per horse for not filing an official entry form with the show office.**

## **GROUP STABLING**

Exhibitors wishing to be stabled together must send entries together in the same envelope with a stall reservation form listing all the owner names. This form must be sent with the entries, as stalls are assigned using this form. If your name does not appear on the Stabling Request Form – we cannot guarantee you will be with the group.

AHA must receive all Stable Request forms for exhibitors wishing to be a part of a group (including on-line entries) by June 26 to guarantee request.

## **PATRON STABLING**

Patron stalling is assigned prior to any non-Patrons. Priority for Patron stalling assignments will be based on the number of continuous years as a **Youth Nationals Patron**, the prior year's stalling location, and number of stalls needed.

Deadline to enroll as a Patron, with fees paid in full to receive stalling preference is June 23.

Piggybacking of farms/trainers will not be allowed. Patron stabling is limited to one trainer/farm per Patronship. Patron farms/stables allowing other farms or trainers to piggyback with them who are NOT PATRONS, run the risk of being moved to other less desirable areas of stalling.

The Patronship name used, must be the Farm/Stable Name on the Official Stabling Request Form. Only the named patron shall be allowed to hang identifying drapes or logos. This policy will be strictly enforced by the Youth National Show Commission.

Farms/stables/individuals wishing to "piggyback" (stall with) other farms/stables/individuals in the patron stalling areas must purchase a Patronship.

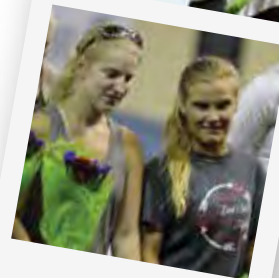
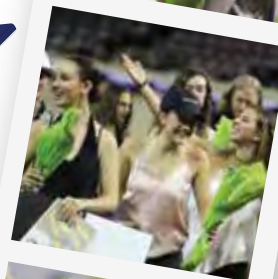
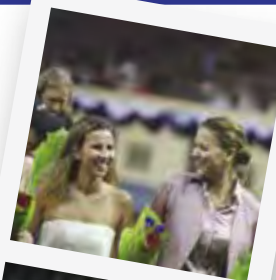
Seniority for stabling will be held with established Youth Nationals Patrons.

## **FEED AND BEDDING**

Feed and Bedding is available through State Fair Park for ON-SITE feed and bedding purchases. Please order feed and bedding prior to your arrival on the enclosed form. Contact phone number is (405) 948-6786. Exhibitors are permitted to bring in outside feed and bedding for personal use, HOWEVER, third party deliveries or sales are strictly prohibited.



# CALLING ALL GRADUATING SENIORS!



If you were born between **12/1/2001 - 12/1/2002** this is your last year to compete as a youth.

We want to honor you!

**Email [youth@arabianhorses.org](mailto:youth@arabianhorses.org) for more details.**





# Official Entry Form

## 2020 YOUTH & MID SUMMER NATIONAL ARABIAN & HALF-ARABIAN CHAMPIONSHIPS



PLEASE TYPE OR PRINT ❖ ONLY ONE HORSE PER ENTRY FORM.

**NEW Post Entries after June 23 accepted by Petition ONLY**

Please check here if this is a Non Competing Horse (Total fees due \$425)

**ALL QUALIFICATIONS HAVE BEEN WAIVED. SELECT, CHOICE & ELITE RIDERS MUST STILL MEET THE DEFINITION**

Horse's Name		Reg. No.		DOB MM/DD/YY	Sex	Color	Sweepstakes Yes No	
Sire		Dam		Horse USEF ID#		Horse USDF #		
<b>Rider 1</b>		Classes / Sections						<b>Total Rider 1</b>
**First Time Rider? Yes NO		Entry Fees	\$	\$	\$	\$	\$	\$
Name				DOB MM/DD/YY	Amateur Certificate Yes No	Rider's Relationship to horse owner(s) for owner classes		
AHA#		USEF/EC#	UPHA#	USDF#		US Citizen: Yes No		
<b>Rider 2</b>		Classes / Sections						<b>Total Rider 2</b>
**First Time Rider? Yes NO		Entry Fees	\$	\$	\$	\$	\$	\$
Name				DOB MM/DD/YY	Amateur Certificate Yes No	Rider's Relationship to horse owner(s) for owner classes		
AHA#		USEF/EC#	UPHA#	USDF#		US Citizen: Yes No		

Each person signing this entry form acknowledges that he/she has read the front and reverse of this Entry Form and agrees to the applicable terms, conditions, waivers. Each person agrees that the information is accurate to the best of his/her knowledge.

**PLEASE ONLY SEND Photo copies of registration papers and USEF/EC Membership cards for each Rider / Driver / Handler / Trainer / Owner with your entry!**

**OWNER INFORMATION** Owner's name as it appears on registration papers/purchase contract

Name \_\_\_\_\_

If Joint owner check one  Non Related Co Owner  Related - What is the Relationship? \_\_\_\_\_

AHA# \_\_\_\_\_ USEF/EC# \_\_\_\_\_ USDF# \_\_\_\_\_

Farm/Ranch \_\_\_\_\_ USEF Farm# \_\_\_\_\_

Current Address \_\_\_\_\_ Phone \_\_\_\_\_

City \_\_\_\_\_ ST \_\_\_\_\_ Zip \_\_\_\_\_

Email \_\_\_\_\_

**TRAINER INFORMATION**

Must be filled out, if there is no trainer, the adult person responsible for the horse at the show

Name \_\_\_\_\_

AHA# \_\_\_\_\_ USEF/EC# \_\_\_\_\_ UPHA# \_\_\_\_\_

Address \_\_\_\_\_ Phone \_\_\_\_\_

City \_\_\_\_\_ ST \_\_\_\_\_ Zip \_\_\_\_\_

Email \_\_\_\_\_

All Acknowledgements will ONLY be emailed to either the Owner \_\_\_\_\_ OR Trainer \_\_\_\_\_ (Check 1 Only)

Email Address (Please Print) \_\_\_\_\_

**NEW Entry closing FOR ALL HORSES & CLASSES**

June 9 to be in Show Program ~June 23 Will NOT be in Show Program

Mail entries to AHA: %Youth & Mid Summer Nationals 10805 E Bethany Dr, Aurora, CO 80014

**Method Of Payment** (US Funds Only) Payment in FULL is due with entries

**\*\*Effective June 1, 2019, a required 3% Convenience Fee will be added by AHA to payments made by Credit Card. A Convenience Fee charge does not apply if the customer submits payment by check or money order.**

Credit Card  Check Enclosed Payable to AHA Check # \_\_\_\_\_

Credit Card#		\$
Print Name as it appears on CC		
Exp Date	CVS	Signature
Credit Card Billing Address (include zip)		

Total Entry Fees.....\$ \_\_\_\_\_

\_\_\_\_ \*\*Post Entry Fee (per horse) @ \$500.....\$ \_\_\_\_\_

**\*\*Upon Approval of Petition**

\_\_\_\_ \*\*Added Class Late Fee (per horse) @ 100 \_\_\_\_\_ \$

**\*\*Upon Approval of Petition**

Competing Horse Mandatory fees include the following and are NOT due when adding classes.

**1 Office Fee per horse .....@ 75**

1 USEF Fee 15. Drug, 8. Admin ....@ 23.

1 AHA Resolution 9-90 .....@ 20.

1 AHA Scoring .....@ 15.

**Mandatory fee Total 133.00.....\$ \_\_\_\_\_**

Stall Fees - Minimum of 1 stall per horse entered

**PLEASE - DO NOT SPLIT COST OF TACK STALLS**

\_\_\_\_ Horse Stalls @ \$250. ....\$ \_\_\_\_\_

(Not due if adding classes)

\_\_\_\_ Tack Stall @ \$250. ....\$ \_\_\_\_\_

**\$425. Non Competing Horse Mandatory Fees \$ \_\_\_\_\_**

(Includes stall, office & Non Competing horse fee)

**USEF Non Member**

\_\_\_\_ USEF Non Member Show Pass @45 .....\$ \_\_\_\_\_

**Optional Items**

\_\_\_\_ Additional Show Program @ \$10. ....\$ \_\_\_\_\_

(Each owner will receive a free program)

\_\_\_\_ For Sale Listing @ \$50. Per horse .....\$ \_\_\_\_\_

\_\_\_\_ Jump or Trail Obstacle Per Horse @ \$25 \$ \_\_\_\_\_

Donation to AHYA .....\$ \_\_\_\_\_

TOTAL FEES .....\$ \_\_\_\_\_

\*\*Convenience fee @ 3% .....\$ \_\_\_\_\_

TOTAL DUE (with Convenience Fee) \$ \_\_\_\_\_

**Entries after JUNE 23 Accepted by PETITION ONLY**

**Office use**

Batch \_\_\_\_\_

Due \_\_\_\_\_

Over/Short \_\_\_\_\_

Invoice# \_\_\_\_\_

Post Mark Date \_\_\_\_\_

**AHA ENTRY AGREEMENT**

I have read the rules concerning competitions as printed in the Arabian Horse Association (AHA) Handbook / Directory and Competition Prize List and agree to be bound by and subject to those Rules.

**AHA ASSUMPTION OF RISK, RELEASE AND INDEMNIFICATION** This document waives very important legal rights. Read it carefully before signing.

In consideration for AHA permitting me to participate in this Competition, and by signing the entry blank, I agree as follows:

**I AGREE** that I choose to participate voluntarily in this Competition, as a rider, driver, handler, lessee, owner, agent, coach, trainer, junior exhibitor, or as a parent or guardian of a junior exhibitor. **I AM FULLY AWARE AND ACKNOWLEDGE THAT HORSE SPORTS AND PARTICIPATION IN THIS COMPETITION INVOLVE SERIOUS RISK OF HARM INCLUDING, BUT NOT LIMITED TO, RISKS OF ACCIDENT, SERIOUS BODILY INJURY, INCLUDING DEATH, BROKEN BONES, HEAD INJURIES, TRAUMA, PAIN, AND SUFFERING, AND PROPERTY DAMAGE. I ASSUME ALL RISKS OF HARM TO ME, MY HORSE OR MY PROPERTY.**

**I AGREE** as a Horse Show Participant (or Parent/Guardian of Participant if a minor) to waive all claims which may otherwise arise from, including but not limited to infectious bacteria, viruses, fungi/mold, parasites or other agents which may be present at the Horse Show (and most other outdoor locations) and can cause infection in humans, as well as in animals.

**I AGREE** for myself, my heirs, executors, administrators, successors and assigns to release AHA, the Competition, the facilities leased by the Competition and the owner(s) of the facilities, and all of their respective officers, officials, directors, employees, agents, personnel, volunteers, affiliated organizations and insurers (collectively, the "Released Parties") from any and all claims for damage, loss, or injury to myself, other persons, horses or other property belonging to me to the fullest extent permitted by law that arises out of or relates in any way to the Competition and my participation in the Competition INCLUDING, BUT NOT LIMITED TO, DAMAGES, LOSS, OR INJURY RESULTING FROM ANY ACTS, FAILURE TO ACT, NEGLIGENCE OR NEGLECT OF OTHER ENTRANTS, THE RELEASED PARTIES, THEIR CONTRACTORS OR INVITEES, as well as for theft, vandalism, fire, other casualty damage, or damage arising out of any defects in the premises.

**I AGREE** to indemnify and hold harmless (that is pay all losses, damages, attorneys fees and costs of) the Released Parties from and against any and all claims, demands, penalties, actions, losses, costs, damages, injuries, liabilities and obligations (including attorneys fees) of whatsoever kind and nature, which may be asserted against or incurred by any of them as a result of (1) my participation in the Competition or (2) any act, failure to act, or neglect (a) by me, my agents, employees, riders, handlers, trainers, coaches, drivers, contractors or invitees, or (b) by any animal owned or exhibited by me or in my custody or control.

**I AGREE** and represent that I am qualified and eligible to enter and/or participate in the Competition, and every horse I am entering is qualified and eligible as entered. **I AGREE** to accept AS FINAL any decision of AHA, the Show Commission or Show Officials concerning my qualification or the qualification of my horse to enter the Competition or any results of the Competition, except to the extent that the Rules of AHA, the Competition, EC or USEF Equestrian permit a protest or hearing of such decisions. Should a hearing be requested, I agree to accept AS FINAL the decision of the particular hearing body. I agree to release, hold harmless and not to sue AHA, the Competition Sponsor, their officers, directors, employees, volunteers or members concerning any decision of AHA, the Competition, its Show Commission, Show Officials or any hearing body that relates to my qualifications or my horse(s)' qualifications to enter the Competition or any results of the Competition.

**I AGREE** that AHA has the sole right to control, sell, supervise or give away (or assign to others the right to do so) the exclusive rights to broadcast, televise, reproduce, transmit and disseminate all or part of this event, and I agree that AHA may use or assign, in any way AHA sees fit, photographs, films, videos, audios, cablecasts, or other likenesses of me and my horse taken during the course of the Competition for the promotion, coverage or benefit of the Competition or AHA. Those likenesses shall not be used to advertise a product and they may not be used in such a way which implies endorsement of any company, product, product category or service. I hereby expressly and irrevocably waive and release any rights in connection with such use, including any claim to compensation, invasion of privacy, right of publicity, or to misappropriation.

**By signing below** as a parent or guardian of a junior exhibitor, I consent to the child's participation and agree to all of the above provisions, and further agree to assume all of the obligations of this AHA Assumption of Risk, Release and Indemnification personally and on behalf of the child.

This AHA Assumption of Risk, Release and Indemnification is governed by the Laws of the State of Colorado and is intended to be interpreted as broadly as possible. I agree that exclusive jurisdiction and venue (place) for any legal action against AHA, its officers, directors, employees, volunteers or agents shall be in the local district courts or the federal court of the State of Colorado. If any part of this agreement is determined to be unenforceable, all other parts shall remain effect.

**USEF FEDERATION ENTRY AGREEMENT**

By entering a Federation-licensed Competition and signing this entry blank as the Owner, Lessee, Trainer, Manager, Agent, Coach, Driver, Rider, Handler, Vaultor or Longeur and on behalf of myself and my principals, representatives, employees and agents, I agree that I am subject to the Bylaws and Rules of The United States Equestrian Federation, Inc. (the "Federation") and the local rules of the Arabian Horse Association National Championships (Competition). I agree to be bound by the Bylaws and Rules of the Federation and of the competition. I will accept as final the decision of the Hearing Committee on any question arising under the Rules, and agree to release and hold harmless the competition, the Federation, their officials, directors and employees for any action taken under the Rules. I represent that I am eligible to enter and/or participate under the Rules, and every horse I am entering is eligible as entered. I also agree that as a condition of and in consideration of acceptance of entry, the Federation and/or the Competition may use or assign photographs, videos, audios, cable - casts, broadcasts, internet, film, new media or other likenesses of me and my horse taken during the course of the competition for the promotion, coverage or benefit of the competition, sport, or the Federation. Those likenesses shall not be used to advertise a product and they may not be used in such a way as to jeopardize amateur status. I hereby expressly and irrevocably waive and release any rights in connection with such use, including any claim to compensation, invasion of privacy, right of publicity, or to misappropriation. The construction and application of Federation rules are governed by the laws of the State of New York, and any action instituted against the Federation must be filed in New York State. See GR908.4.

**I HAVE CAREFULLY READ THIS DOCUMENT IN ITS ENTIRETY, UNDERSTAND ALL OF ITS TERMS AND CONDITIONS, AND KNOW IT CONTAINS AN ASSUMPTION OF RISK, RELEASE AND WAIVER FROM LIABILITY, AS WELL AS A HOLD HARMLESS AND INDEMNIFICATION OBLIGATIONS.**

**By signing below**, I (as the participant or as the Parent/Legal Guardian of the minor identified below) hereby accept and agree to the terms and conditions of this Agreement in connection with my (or the minor's) participation in any USEF Event. If, despite this Agreement, I, or anyone on my behalf or the minor's behalf, makes a claim for Liability against any of the Released Parties, I will indemnify, defend and hold harmless each of the Released Parties from any such Liabilities as the result of such claim.

**BY SIGNING BELOW, I AGREE** to be bound by all applicable Federation Rules and all terms and provisions of this entry blank and all terms and provisions of this Prize List. If I am signing and submitting this Agreement electronically, I acknowledge that my electronic signature shall have the same validity, force and effect as if I affixed my signature by my own hand.

Owner <b>** Mandatory Must be Adult</b>	Print Name	**Adult Signature
Trainer or Custodian of horse @ show <b>** Mandatory Must be Adult</b>	Print Name	**Adult Signature
Rider 1 <b>** Mandatory Must be Adult</b>	Print Name	**Adult Signature
Rider 2 <b>** Mandatory Must be Adult</b>	Print Name	**Adult Signature
Coach – (if applicable) USEF #	Print Name	**Adult Signature
Print Minor Name Here	Print Parent/Guardian Name Here	**Adult Signature
Print Minor Name Here	Print Parent/Guardian Name Here	**Adult Signature

**\*\*\*\*\* EMERGENCY PHONE NUMBER FOR EXHIBITOR**

**MUST BE SIGNED IN AT LEAST 3 PLACES BY ADULTS ONLY**  
**AHA or USEF/EC Membership is not required for Parents/Guardians signing for minors.**

## USEF WAIVER AND RELEASE OF LIABILITY, ASSUMPTION OF RISK AND INDEMNITY AGREEMENT

For and in consideration of United States Equestrian Federation, Inc. dba US Equestrian (“USEF”) allowing me, the undersigned, to participate in any capacity (including as a rider, driver, handler, vaulter, longeur, lessee, owner, agent, coach, official, trainer or volunteer) in a USEF sanctioned, licensed or approved event or activity, including but not limited to equestrian clinics, practices, shows, competitions and related or incidental activities of the Arabian Horse Association Events (“USEF Event” or “USEF Events”); I, for myself, and on behalf of my spouse, children, heirs and next of kin, and any legal and personal representatives, executors, administrators, successors, and assigns, hereby agree to and make the following contractual representations pursuant to this Agreement (the “**Agreement**”):

**A. RULES AND REGULATIONS:** I hereby agree to be bound and abide by the rules, regulations, and policies of USEF as published in the USEF Rule Book and on the website at www.usef.org, as amended from time to time.

**B. ACKNOWLEDGMENT OF RISK:** I knowingly, willingly, and voluntarily acknowledge the inherent risks associated with the sport of equestrian and know that horseback riding and related equestrian activities are inherently dangerous, and that participation in any USEF Event involves risks and dangers including, without limitation, the potential for serious bodily injury (including broken bones, head or neck injuries), sickness and disease (including communicable diseases), trauma, pain & suffering, permanent disability, paralysis and death; loss of or damage to personal property (including my mount & equipment) arising out of the unpredictable behavior of horses; exposure to extreme conditions and circumstances; accidents involving other participants, event staff, volunteers or spectators; contact or collision with other participants and horses, natural or manmade objects; adverse weather conditions; facilities issues and premises conditions; failure of protective equipment (including helmets); inadequate safety measures; participants of varying skill levels; situations beyond the immediate control of the USEF Event organizers and competition management; and other undefined, not readily foreseeable and presently unknown risks and dangers (“**Risks**”).

### EQUINE ACTIVITY LIABILITY ACT WARNING:

CAUTION: HORSEBACK RIDING AND EQUINE ACTIVITIES CAN BE DANGEROUS. RIDE AT YOUR OWN RISK.

**Under the laws of most States, an equine activity sponsor or equine professional is not liable for any injury to, or the death of, a participant in equine activities resulting from the inherent risks of equine activities.**

**C. ASSUMPTION OF RISK:** I understand that the aforementioned Risks may be caused in whole or in part or result directly or indirectly from the negligence of my own actions or inactions, the actions or inactions of others participating in the USEF Events, or the negligent acts or omissions of the Released Parties defined below, and I hereby voluntarily and knowingly assume all such Risks and responsibility for any damages, liabilities, losses, or expenses that I incur as a result of my participation in any USEF Events. I also agree to be responsible for any injury or damage caused by me, my horse, my employees or contractors under my direction and control at any USEF Event.

**D. WAIVER AND RELEASE OF LIABILITY, HOLD HARMLESS AND INDEMNITY:** In conjunction with my participation in any USEF Event, I hereby release, waive and covenant not to sue, and further agree to indemnify, defend and hold harmless the following parties: USEF, USEF Recognized Affiliate Associations, the United States Olympic & Paralympic Committee (USOPC), USEF clubs, members, Event participants (including athletes/riders, coaches, trainers, judges/officials, and other personnel), the Event owner, licensee, and competition managers; the promoters, sponsors, or advertisers of any USEF Event; any charity or other beneficiary which may benefit from the USEF Event; the owners, managers, or lessors of any facilities or premises where a USEF Event may be held; and all directors, officers, employees, agents, contractors, and volunteers of any of the aforementioned parties (**Individually and Collectively, the “Released Parties” or “Event Organizers”**), with respect to any liability, claim(s), demand(s), cause(s) of action, damage(s), loss, or expense (including court costs and reasonable attorney fees) of any kind or nature (“**Liability**”) which may arise out of, result from, or relate in any way to my participation in the USEF Events, including claims for Liability caused in whole or in part by the negligent acts or omissions of the Released Parties.

**E. COMPLETE AGREEMENT AND SEVERABILITY CLAUSE:** This Agreement represents the complete understanding between the parties regarding these issues and no oral representations, statements or inducements have been made apart from this Agreement. If any provision of this Agreement is held to be unlawful, void, or for any reason unenforceable, then that provision shall be deemed severable from this Agreement and shall not affect the validity and enforceability of any remaining provisions.

**I HAVE CAREFULLY READ THIS DOCUMENT IN ITS ENTIRETY, UNDERSTAND ALL OF ITS TERMS AND CONDITIONS, AND KNOW IT CONTAINS AN ASSUMPTION OF RISK, RELEASE AND WAIVER FROM LIABILITY, AS WELL AS A HOLD HARMLESS AND INDEMNIFICATION OBLIGATIONS.**

**By signing below, I (as the participant or as the Parent/Legal Guardian of the minor identified below) hereby accept and agree to the terms and conditions of this Agreement in connection with my (or the minor’s) participation in any USEF Event. If, despite this Agreement, I, or anyone on my behalf or the minor’s behalf, makes a claim for Liability against any of the Released Parties, I will indemnify, defend and hold harmless each of the Released Parties from any such Liabilities as the result of such claim.**

**The parties agree that this agreement may be electronically signed. The parties agree that the electronic signatures appearing on this agreement are the same as handwritten signatures for the purposes of validity, enforceability, and admissibility.**

Owner <b>** Mandatory Must be Adult</b>	Print Name	**Adult Signature
Trainer or Custodian of horse @ show <b>** Mandatory Must be Adult</b>	Print Name	**Adult Signature
Rider 1 <b>** Mandatory Must be Adult</b>	Print Name	**Adult Signature
Rider 2 <b>** Mandatory Must be Adult</b>	Print Name	**Adult Signature
Coach – (if applicable) USEF #	Print Name	**Adult Signature
Print Minor Name Here	Print Parent/Guardian Name Here	**Adult Signature
Print Minor Name Here	Print Parent/Guardian Name Here	**Adult Signature

**\*\*\*\*\* EMERGENCY PHONE NUMBER FOR EXHIBITOR**

**MUST BE SIGNED IN AT LEAST 3 PLACES BY ADULTS ONLY  
AHA or USEF/EC Membership is not required for Parents/Guardians signing for minors.**



# EXPERIENCE AHYA 2020 Entry Form

PLEASE TYPE OR PRINT ❖ ONLY ONE HORSE PER ENTRY FORM.

For more than 2 riders please use an additional entry form.

Please check here if this is adding classes for a horse already entered

**\*\* New for 2020 ~The horse may cross enter into the Youth National Championship Show.  
Rider May NOT cross enter into the Youth National Championship Show.**

Horse's Name		Reg. No.		DOB MM/DD/YY		Sweepstakes Yes No	
Sire		Dam		Sex		Color	
Rider 1	Classes						
Name					DOB MM/DD/YY		
AHA#		USEF/EC # (if available)			US Citizen: Yes No		
Rider 2	Classes						
Name					DOB MM/DD/YY		
AHA#		USEF/EC # (if available)			US Citizen: Yes No		

Each person signing this entry form acknowledges that he/she has read the front and reverse of this Entry Form and agrees to the applicable terms, conditions, waivers. Each person agrees that the information is accurate to the best of his/her knowledge.

**PLEASE ONLY SEND Photo copies of registration papers**

### OWNER INFORMATION Owner name as it appears on registration papers/purchase contract

Name \_\_\_\_\_  
 AHA# \_\_\_\_\_ USEF/EC # (if available) \_\_\_\_\_  
 Farm/Ranch \_\_\_\_\_ USEF Farm# \_\_\_\_\_  
 Current Address \_\_\_\_\_ Phone \_\_\_\_\_  
 City \_\_\_\_\_ ST \_\_\_\_\_ Zip \_\_\_\_\_  
 Email \_\_\_\_\_

### TRAINER INFORMATION (must be filled out, if there is no trainer, the person responsible for the horse at the show)

Name \_\_\_\_\_  
 AHA# \_\_\_\_\_ USEF/EC# \_\_\_\_\_  
 Address \_\_\_\_\_ Phone \_\_\_\_\_  
 City \_\_\_\_\_ ST \_\_\_\_\_ Zip \_\_\_\_\_  
 Email \_\_\_\_\_

All Acknowledgements will ONLY be emailed to either the Owner \_\_\_\_\_ OR Trainer \_\_\_\_\_ (Check 1 Only)

OR Email Address (Please Print) \_\_\_\_\_

PLEASE SEND STABLE REQUEST WITH YOUR ENTRY FORM - ONLY ONE STABLE REQUEST PER GROUP

Send entries to Att: AHA Youth Nationals Mail to 10805 E Bethany Dr, Aurora, CO 80014  
Fax to 303-696-4599 or email to NationalEvents@arabianhorses.org

**Method Of Payment** (US Funds Only) Payment in FULL is due with entries

\*\* Effective June 1, 2019, a required 3% Convenience Fee will be added by AHA to payments made by Credit Card. A Convenience Fee charge does not apply if the customer submits payment by check or money order.

Credit Card  Check Enclosed Payable to AHA Check # \_\_\_\_\_

Credit Card#	\$	
Print Name as it appears on CC		
Exp Date	CVS	Signature
Credit Card Billing Address (include zip)		

\_\_\_ Total Class Fees @ \$35. Per class ---- \$ \_\_\_\_\_

\_\_\_ One time late fee @ \$50 Per horse --\$ \_\_\_\_\_  
For entries rcvd after June 24 to July 16 5PM

Mandatory fees include the following and are NOT due when adding classes.

1 Office Fee per horse ----- @ 75

1 USEF Fee 15. Drug. 8. Admin ---- @ 23

1 AHA Resolution 9-90 ----- @ 20

\_\_\_ Mandatory fee Total \$118 ----- \$ \_\_\_\_\_

Stall Fees - Minimum of 1 stall per horse entered  
PLEASE - DO NOT SPLIT COST OF TACK STALLS

\_\_\_ Horse Stalls @ \$250. ----- \$ \_\_\_\_\_  
(Not due if adding classes)

\_\_\_ Tack Stall @ \$250. ----- \$ \_\_\_\_\_

### Optional Items

\_\_\_ Additional Show Program @ \$10. ----- \$ \_\_\_\_\_  
(Each owner will receive a free program)

\_\_\_ For Sale Listing @ \$50. Per horse ----- \$ \_\_\_\_\_

Donation to AHYA ----- \$ \_\_\_\_\_

TOTAL FEES DUE (Check or MO) \$ \_\_\_\_\_

\*\* Convenience fee @ 3% ----- \$ \_\_\_\_\_

TOTAL DUE (with Convenience fee) \$ \_\_\_\_\_

All Entry forms must be signed  
on the back by an Adult

**Closing Date - June 24**  
**No additional horses accepted**  
**after Thursday July 16, 5 PM**

### Office use

Batch \_\_\_\_\_

Due \_\_\_\_\_

Over/Short \_\_\_\_\_

Invoice# \_\_\_\_\_

Post Mark Date \_\_\_\_\_

## AHA ENTRY AGREEMENT

I have read the rules concerning competitions as printed in the Arabian Horse Association (AHA) Handbook / Directory and Competition Prize List and agree to be bound by and subject to those Rules.

**AHA ASSUMPTION OF RISK, RELEASE AND INDEMNIFICATION** This document waives very important legal rights. Read it carefully before signing.

In consideration for AHA permitting me to participate in this Competition, and by signing the entry blank, I agree as follows:

**I AGREE** that I choose to participate voluntarily in this Competition, as a rider, driver, handler, lessee, owner, agent, coach, trainer, junior exhibitor, or as a parent or guardian of a junior exhibitor. **I AM FULLY AWARE AND ACKNOWLEDGE THAT HORSE SPORTS AND PARTICIPATION IN THIS COMPETITION INVOLVE SERIOUS RISK OF HARM INCLUDING, BUT NOT LIMITED TO, RISKS OF ACCIDENT, SERIOUS BODILY INJURY, INCLUDING DEATH, BROKEN BONES, HEAD INJURIES, TRAUMA, PAIN, AND SUFFERING, AND PROPERTY DAMAGE. I ASSUME ALL RISKS OF HARM TO ME, MY HORSE OR MY PROPERTY.**

**I AGREE** as a Horse Show Participant (or Parent/Guardian of Participant if a minor) to waive all claims which may otherwise arise from, including but not limited to infectious bacteria, viruses, fungi/mold, parasites or other agents which may be present at the Horse Show (and most other outdoor locations) and can cause infection in humans, as well as in animals.

**I AGREE** for myself, my heirs, executors, administrators, successors and assigns to release AHA, the Competition, the facilities leased by the Competition and the owner(s) of the facilities, and all of their respective officers, officials, directors, employees, agents, personnel, volunteers, affiliated organizations and insurers (collectively, the "Released Parties") from any and all claims for damage, loss, or injury to myself, other persons, horses or other property belonging to me to the fullest extent permitted by law that arises out of or relates in any way to the Competition and my participation in the Competition INCLUDING, BUT NOT LIMITED TO, DAMAGES, LOSS, OR INJURY RESULTING FROM ANY ACTS, FAILURE TO ACT, NEGLIGENCE OR NEGLECT OF OTHER ENTRANTS, THE RELEASED PARTIES, THEIR CONTRACTORS OR INVITEES, as well as for theft, vandalism, fire, other casualty damage, or damage arising out of any defects in the premises. **I AGREE** to indemnify and hold harmless (that is pay all losses, damages, attorneys fees and costs of) the Released Parties from and against any and all claims, demands, penalties, actions, losses, costs, damages, injuries, liabilities and obligations (including attorneys fees) of whatsoever kind and nature, which may be asserted against or incurred by any of them as a result of (1) my participation in the Competition or (2) any act, failure to act, or neglect (a) by me, my agents, employees, riders, handlers, trainers, coaches, drivers, contractors or invitees, or (b) by any animal owned or exhibited by me or in my custody or control.

**I AGREE** and represent that I am qualified and eligible to enter and/or participate in the Competition, and every horse I am entering is qualified and eligible as entered. **I AGREE** to accept AS FINAL any decision of AHA, the Show Commission or Show Officials concerning my qualification or the qualification of my horse to enter the Competition or any results of the Competition, except to the extent that the Rules of AHA, the Competition, EC or USEF Equestrian permit a protest or hearing of such decisions. Should a hearing be requested, I agree to accept AS FINAL the decision of the particular hearing body. I agree to release, hold harmless and not to sue AHA, the Competition Sponsor, their officers, directors, employees, volunteers or members concerning any decision of AHA, the Competition, its Show Commission, Show Officials or any hearing body that relates to my qualifications or my horse(s)' qualifications to enter the Competition or any results of the Competition.

**I AGREE** that AHA has the sole right to control, sell, supervise or give away (or assign to others the right to do so) the exclusive rights to broadcast, televise, reproduce, transmit and disseminate all or part of this event, and I agree that AHA may use or assign, in any way AHA sees fit, photographs, films, videos, audios, cablecasts, or other likenesses of me and my horse taken during the course of the Competition for the promotion, coverage or benefit of the Competition or AHA. Those likenesses shall not be used to advertise a product and they may not be used in such a way which implies endorsement of any company, product, product category or service. I hereby expressly and irrevocably waive and release any rights in connection with such use, including any claim to compensation, invasion of privacy, right of publicity, or to misappropriation.

**By signing below** as a parent or guardian of a junior exhibitor, I consent to the child's participation and agree to all of the above provisions, and further agree to assume all of the obligations of this AHA Assumption of Risk, Release and Indemnification personally and on behalf of the child.

This AHA Assumption of Risk, Release and Indemnification is governed by the Laws of the State of Colorado and is intended to be interpreted as broadly as possible. I agree that exclusive jurisdiction and venue (place) for any legal action against AHA, its officers, directors, employees, volunteers or agents shall be in the local district courts or the federal court of the State of Colorado. If any part of this agreement is determined to be unenforceable, all other parts shall remain effect.

## USEF FEDERATION ENTRY AGREEMENT

By entering a Federation-licensed Competition and signing this entry blank as the Owner, Lessee, Trainer, Manager, Agent, Coach, Driver, Rider, Handler, Vaultor or Longeur and on behalf of myself and my principals, representatives, employees and agents, I agree that I am subject to the Bylaws and Rules of The United States Equestrian Federation, Inc. (the "Federation") and the local rules of the Arabian Horse Association National Championships (Competition). I agree to be bound by the Bylaws and Rules of the Federation and of the competition. I will accept as final the decision of the Hearing Committee on any question arising under the Rules, and agree to release and hold harmless the competition, the Federation, their officials, directors and employees for any action taken under the Rules. I represent that I am eligible to enter and/or participate under the Rules, and every horse I am entering is eligible as entered. I also agree that as a condition of and in consideration of acceptance of entry, the Federation and/or the Competition may use or assign photographs, videos, audios, cable - casts, broadcasts, internet, film, new media or other likenesses of me and my horse taken during the course of the competition for the promotion, coverage or benefit of the competition, sport, or the Federation. Those likenesses shall not be used to advertise a product and they may not be used in such a way as to jeopardize amateur status. I hereby expressly and irrevocably waive and release any rights in connection with such use, including any claim to compensation, invasion of privacy, right of publicity, or to misappropriation. The construction and application of Federation rules are governed by the laws of the State of New York, and any action instituted against the Federation must be filed in New York State. See GR908.4.

**I HAVE CAREFULLY READ THIS DOCUMENT IN ITS ENTIRETY, UNDERSTAND ALL OF ITS TERMS AND CONDITIONS, AND KNOW IT CONTAINS AN ASSUMPTION OF RISK, RELEASE AND WAIVER FROM LIABILITY, AS WELL AS A HOLD HARMLESS AND INDEMNIFICATION OBLIGATIONS.**

**By signing below**, I (as the participant or as the Parent/Legal Guardian of the minor identified below) hereby accept and agree to the terms and conditions of this Agreement in connection with my (or the minor's) participation in any USEF Event. If, despite this Agreement, I, or anyone on my behalf or the minor's behalf, makes a claim for Liability against any of the Released Parties, I will indemnify, defend and hold harmless each of the Released Parties from any such Liabilities as the result of such claim.

**BY SIGNING BELOW, I AGREE** to be bound by all applicable Federation Rules and all terms and provisions of this entry blank and all terms and provisions of this Prize List. If I am signing and submitting this Agreement electronically, I acknowledge that my electronic signature shall have the same validity, force and effect as if I affixed my signature by my own hand.

Owner <b>** Mandatory Must be Adult</b>	Print Name	**Adult Signature
Trainer or Custodian of horse @ show <b>** Mandatory Must be Adult</b>	Print Name	**Adult Signature
Rider 1 <b>** Mandatory Must be Adult</b>	Print Name	**Adult Signature
Rider 2 <b>** Mandatory Must be Adult</b>	Print Name	**Adult Signature
Coach – (if applicable) USEF #	Print Name	**Adult Signature
Print Minor Name Here	Print Parent/Guardian Name Here	**Adult Signature
Print Minor Name Here	Print Parent/Guardian Name Here	**Adult Signature

**\*\*\*\*\* EMERGENCY PHONE NUMBER FOR EXHIBITOR**

**MUST BE SIGNED IN AT LEAST 3 PLACES BY ADULTS ONLY**  
**AHA or USEF/EC Membership is not required for Parents/Guardians signing for minors.**



## USEF WAIVER AND RELEASE OF LIABILITY, ASSUMPTION OF RISK AND INDEMNITY AGREEMENT

For and in consideration of United States Equestrian Federation, Inc. dba US Equestrian (“USEF”) allowing me, the undersigned, to participate in any capacity (including as a rider, driver, handler, vaulter, longeur, lessee, owner, agent, coach, official, trainer or volunteer) in a USEF sanctioned, licensed or approved event or activity, including but not limited to equestrian clinics, practices, shows, competitions and related or incidental activities of the Arabian Horse Association Events (“USEF Event” or “USEF Events”); I, for myself, and on behalf of my spouse, children, heirs and next of kin, and any legal and personal representatives, executors, administrators, successors, and assigns, hereby agree to and make the following contractual representations pursuant to this Agreement (the “Agreement”):

**A. RULES AND REGULATIONS:** I hereby agree to be bound and abide by the rules, regulations, and policies of USEF as published in the USEF Rule Book and on the website at www.usef.org, as amended from time to time.

**B. ACKNOWLEDGMENT OF RISK:** I knowingly, willingly, and voluntarily acknowledge the inherent risks associated with the sport of equestrian and know that horseback riding and related equestrian activities are inherently dangerous, and that participation in any USEF Event involves risks and dangers including, without limitation, the potential for serious bodily injury (including broken bones, head or neck injuries), sickness and disease (including communicable diseases), trauma, pain & suffering, permanent disability, paralysis and death; loss of or damage to personal property (including my mount & equipment) arising out of the unpredictable behavior of horses; exposure to extreme conditions and circumstances; accidents involving other participants, event staff, volunteers or spectators; contact or collision with other participants and horses, natural or manmade objects; adverse weather conditions; facilities issues and premises conditions; failure of protective equipment (including helmets); inadequate safety measures; participants of varying skill levels; situations beyond the immediate control of the USEF Event organizers and competition management; and other undefined, not readily foreseeable and presently unknown risks and dangers (“Risks”).

### EQUINE ACTIVITY LIABILITY ACT WARNING:

CAUTION: HORSEBACK RIDING AND EQUINE ACTIVITIES CAN BE DANGEROUS. RIDE AT YOUR OWN RISK.

**Under the laws of most States, an equine activity sponsor or equine professional is not liable for any injury to, or the death of, a participant in equine activities resulting from the inherent risks of equine activities.**

**C. ASSUMPTION OF RISK:** I understand that the aforementioned Risks may be caused in whole or in part or result directly or indirectly from the negligence of my own actions or inactions, the actions or inactions of others participating in the USEF Events, or the negligent acts or omissions of the Released Parties defined below, and I hereby voluntarily and knowingly assume all such Risks and responsibility for any damages, liabilities, losses, or expenses that I incur as a result of my participation in any USEF Events. I also agree to be responsible for any injury or damage caused by me, my horse, my employees or contractors under my direction and control at any USEF Event.

**D. WAIVER AND RELEASE OF LIABILITY, HOLD HARMLESS AND INDEMNITY:** In conjunction with my participation in any USEF Event, I hereby release, waive and covenant not to sue, and further agree to indemnify, defend and hold harmless the following parties: USEF, USEF Recognized Affiliate Associations, the United States Olympic & Paralympic Committee (USOPC), USEF clubs, members, Event participants (including athletes/riders, coaches, trainers, judges/officials, and other personnel), the Event owner, licensee, and competition managers; the promoters, sponsors, or advertisers of any USEF Event; any charity or other beneficiary which may benefit from the USEF Event; the owners, managers, or lessors of any facilities or premises where a USEF Event may be held; and all directors, officers, employees, agents, contractors, and volunteers of any of the aforementioned parties (**Individually and Collectively, the “Released Parties” or “Event Organizers”**), with respect to any liability, claim(s), demand(s), cause(s) of action, damage(s), loss, or expense (including court costs and reasonable attorney fees) of any kind or nature (“**Liability**”) which may arise out of, result from, or relate in any way to my participation in the USEF Events, including claims for Liability caused in whole or in part by the negligent acts or omissions of the Released Parties.

**E. COMPLETE AGREEMENT AND SEVERABILITY CLAUSE:** This Agreement represents the complete understanding between the parties regarding these issues and no oral representations, statements or inducements have been made apart from this Agreement. If any provision of this Agreement is held to be unlawful, void, or for any reason unenforceable, then that provision shall be deemed severable from this Agreement and shall not affect the validity and enforceability of any remaining provisions.

**I HAVE CAREFULLY READ THIS DOCUMENT IN ITS ENTIRETY, UNDERSTAND ALL OF ITS TERMS AND CONDITIONS, AND KNOW IT CONTAINS AN ASSUMPTION OF RISK, RELEASE AND WAIVER FROM LIABILITY, AS WELL AS A HOLD HARMLESS AND INDEMNIFICATION OBLIGATIONS.**

**By signing below, I (as the participant or as the Parent/Legal Guardian of the minor identified below) hereby accept and agree to the terms and conditions of this Agreement in connection with my (or the minor’s) participation in any USEF Event. If, despite this Agreement, I, or anyone on my behalf or the minor’s behalf, makes a claim for Liability against any of the Released Parties, I will indemnify, defend and hold harmless each of the Released Parties from any such Liabilities as the result of such claim.**

**The parties agree that this agreement may be electronically signed. The parties agree that the electronic signatures appearing on this agreement are the same as handwritten signatures for the purposes of validity, enforceability, and admissibility.**

Owner <b>** Mandatory Must be Adult</b>	Print Name	**Adult Signature
Trainer or Custodian of horse @ show <b>** Mandatory Must be Adult</b>	Print Name	**Adult Signature
Rider 1 <b>** Mandatory Must be Adult</b>	Print Name	**Adult Signature
Rider 2 <b>** Mandatory Must be Adult</b>	Print Name	**Adult Signature
Coach – (if applicable) USEF #	Print Name	**Adult Signature
Print Minor Name Here	Print Parent/Guardian Name Here	**Adult Signature
Print Minor Name Here	Print Parent/Guardian Name Here	**Adult Signature
<b>***** EMERGENCY PHONE NUMBER FOR EXHIBITOR</b>		
<b>MUST BE SIGNED IN AT LEAST 3 PLACES BY <u>ADULTS ONLY</u></b>		
<b>AHA or USEF/EC Membership is not required for Parents/Guardians signing for minors.</b>		

EVERYTHING STRONG BEGINS WITH A **SOLID FOUNDATION...**

# SCHOLARSHIPS!



The Arabian Horse Foundation is looking to once again provide numerous scholarships at Youth Nationals. To help us support our youth and provide as many scholarships as possible please consider donating to our scholarship fund.

If interested in donating please contact [katharyn.hart@gmail.com](mailto:katharyn.hart@gmail.com).





# 2020 YOUTH & MID SUMMER NATIONALS OFFICIAL STABLING REQUEST FORM



PLEASE SUBMIT ONLY ONE FORM PER GROUP TO BE STABLED TOGETHER  
**ALL HORSES, Competing or Non-Competing must be listed below**

*Additional tack stalls MUST be ordered on an entry form leaving the horse information blank*

To guarantee stalling this form must be **received** at the AHA office no later than Wednesday **June 24, 2020**

**EITHER send this form with your entries or;**

**FAX;** Attention Youth Nationals to 303-696-4599

**EMAIL;** "Youth Nationals Stabling" in the subject line to: [nationalevents@arabianhorses.org](mailto:nationalevents@arabianhorses.org)

**After June 25 for additional stalls contact the Barn Manager Ben Carrillo @ 505-450-3203**

PATRON / FARM / STABLE NAME \_\_\_\_\_

(If you are a patron, the Patronship must match the above name—Otherwise you will not receive preferred priority in stalling assignments)

Trainer Name \_\_\_\_\_

I would like to request to be stabled (area) \_\_\_\_\_

Contact Person \_\_\_\_\_ Daytime Phone \_\_\_\_\_

Email \_\_\_\_\_

CHECK HERE IF THIS IS AN UPDATED STALL RESERVATION AND PLEASE INDICATE THE ADDED HORSES/OWNER

Check for		Owners Name	Horses Name	# Horse Stalls	#Tack Stalls
Online entry	Non Competing Horse				
		1			
		2			
		3			
		4			
		5			
		6			
		7			
		8			
		9			
		10			
		11			
		12			
		13			
		14			
		15			
		16			
		17			
		18			
		19			
		20			
<input type="checkbox"/> CHECK HERE IF YOU ARE A YOUTH NATIONALS PATRON <b>ONCE CHECKED PATRONSHIP IS NOT EXCHANGABLE OR REFUNDABLE</b>			Total # of Stalls		

*If someone requests to be stabled with you and they are not listed above, should we accommodate that request? YES\_\_\_ NO\_\_\_?*

**Patron stabling is limited to one trainer/farm per Patronship. Piggybacking of farms/trainers will not be allowed.**

SIGNATURE (required) \_\_\_\_\_



# 2020 Youth and Mid Summer National Championship Show

## Patron Form

Deadline with fees paid in full is **June 9, 2020**

**Patronship Package Package 1 - \$2,700** ..... \$ \_\_\_\_\_

- Four (4) Meal Tickets and Pins for breakfast, lunch and evening snacks
- Patron stalling assigned prior to all others, based on seniority
- Reserved Patron seating with prime seating at the arena of your choice
- Recognition through center ring announcements and in the Official Show Program
- Class presentation opportunity in center ring
- Specially selected gift package
- Bags of ice available upon request up to 7 bags
- Two free show programs

**Patronship Package Package 2 - \$3,200** ..... \$ \_\_\_\_\_

- Four (4) Meal Tickets and Pins for breakfast, lunch and evening snacks
- Golf Cart OR Rental Car OR Swamp Cooler Fan OR Two (2) Additional Meal Tickets, *if no selection is made Golf Cart will be default*
- Patron stalling assigned prior to all others, based on seniority
- Reserved Patron seating with prime seating at the arena of your choice
- Recognition through center ring announcements and in the Official Show Program
- Class presentation opportunity in center ring
- Specially selected gift package
- Bags of ice available upon request up to 7 bags
- Two free show programs

Please select one of the following for Package 2

Golf Cart     Intermediate Size Rental Car     Swamp Cooler Fan     Two (2) Additional Meal Tickets

# \_\_\_\_\_ **Additional Meal Tickets (Limit to 4) @ \$400** ..... \$ \_\_\_\_\_

- One Patron pin per meal ticket allowing access to the Patron's Lounge

**Arena Sign (Patron Rate) on-Video Side @ \$400** ..... \$ \_\_\_\_\_

- One arena sign
- Logo Artwork (hi-res .jpeg or hi-res adobe file) must be received by AHA by **6/9/2020**
- Arena of your choice (please specify which arena)

Jim Norick Arena                       Performance Arena                       Specialty Arena

\*\*\*Signature \_\_\_\_\_

\*\*\*Submission of a signed patronship form constitutes agreement by signing party for a payment for patronship, of which 50% is nonrefundable if canceled after the close of show entries.

### Sponsorship Information for Patron Package 1

First Choice    Class# \_\_\_\_\_ Class Name \_\_\_\_\_

Second Choice    Class# \_\_\_\_\_ Class Name \_\_\_\_\_

Third Choice    Class# \_\_\_\_\_ Class Name \_\_\_\_\_

Sponsor Name (*this name will be used as the published name*) \_\_\_\_\_

Contact Name \_\_\_\_\_ AHA Account # to Bill \_\_\_\_\_

Phone # \_\_\_\_\_ Email \_\_\_\_\_

<b>Method Of Payment (US Funds Only)</b>		
"Effective June 1, 2019, a required 3% Convenience Fee will be added by AHA to payments made by Credit Card. A Convenience Fee charge does not apply if the customer submits payment by check or money order."		
<input type="checkbox"/> Credit Card	<input type="checkbox"/> Check Enclosed	Payable to AHA      Check # _____
<b>Credit Card#</b> _____		\$ _____
Print Name as it appears on CC _____		
Exp Date _____	CVS _____	Signature _____
Credit Card Billing Address (include zip) _____		





# 2020 Youth Nationals Sponsorship Form

Deadline with fees paid in full is **June 2, 2020**

## Champion Class Sponsor

- Jacket/Belt Buckle Sponsorship** ..... \$300
  - Sponsorship of Champion Award (either the jacket or belt buckle, as chosen by the winner)
  - Inclusion in the Youth Nationals Official Show Program
  - Recognition through Center Ring announcements
- Class Section Sponsorship** ..... \$50
  - Inclusion in the Youth Nationals Official Show Program
  - Recognition through Center Ring announcements

## Arena Sign

- Video Side** ..... \$600
  - Non-Video Side** ..... \$500
    - One arena sign
    - Logo Artwork (hi-res .jpeg or hi-res adobe file) must be received by AHA by **6/2/2020**
    - Arena of your choice (please specify which arena)
- Jim Norick Arena    Performance Arena    Specialty Arena

## Sponsorship Information

First Choice    Class# \_\_\_\_\_ Class Name \_\_\_\_\_

Second Choice    Class# \_\_\_\_\_ Class Name \_\_\_\_\_

Third Choice    Class# \_\_\_\_\_ Class Name \_\_\_\_\_

Sponsor Name (*this name will be used as the published name*) \_\_\_\_\_

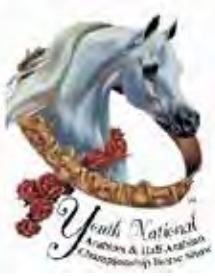
Contact Name \_\_\_\_\_ AHA Account # to Bill \_\_\_\_\_

Phone # \_\_\_\_\_ Email \_\_\_\_\_

**\*\*Sponsorships are non-refundable. All Sponsorships are due by June 2, 2020\*\***

<b>Method Of Payment</b> (US Funds Only)	
Effective June 1, 2019, a required 3% Convenience Fee will be added by AHA to payments made by Credit Card. A Convenience Fee charge does not apply if the customer submits payment by check or money order.	
<input type="checkbox"/> Credit Card <input type="checkbox"/> Check Enclosed    Payable to AHA    Check # _____	
Credit Card#	\$
Print Name as it appears on CC	
Exp Date	CVS
	Signature
Credit Card Billing Address (include zip)	





# 2020 Youth and Mid Summer National Championship Retirement Form

Deadline with fees paid in full is **June 2, 2020**

**Retirement Ceremony.....\$2,000**

- A maximum of 3 Retirements will be held in Jim Norick Arena and 2 Retirements in the Performance Arena
- 4 National Championships earned by the retirement horse are required for retirement ceremony eligibility.
- Final approval of the retirement ceremonies will be selected by the Youth Nationals Show Commission
- Time of retirement ceremonies during the show will be determined by the Youth Nationals Show Commission
- Horse stall is not included in this fee.

## Contact Information

Horse Name \_\_\_\_\_

Owner's Name \_\_\_\_\_

Contact Name \_\_\_\_\_ AHA Account # to Bill \_\_\_\_\_

Phone # \_\_\_\_\_ Email \_\_\_\_\_

## Accomplishments

Please list national championships and any other notable accomplishments earned in the space below:

---



---



---



---



---



---

### Method Of Payment (US Funds Only)

Effective June 1, 2019, a required 3% Convenience Fee will be added by AHA to payments made by Credit Card.

A Convenience Fee charge does not apply if the customer submits payment by check or money order.

Credit Card     Check Enclosed    Payable to AHA    Check # \_\_\_\_\_

Credit Card# \_\_\_\_\_ \$ \_\_\_\_\_

Print Name as it appears on CC \_\_\_\_\_

Exp Date \_\_\_\_\_ CVS \_\_\_\_\_ Signature \_\_\_\_\_

Credit Card Billing Address (include zip) \_\_\_\_\_





# 2020 NOMINATION/ENTRY FORM Mid Summer National Championships

Entries for AWP A Maturity classes are accepted until close of entries for Mid Summer National Championships. The last date post entries will be accepted by AWP A is the same as the date accepted by AHA. Current Affiliate, Direct or Life AHA Membership is required for participation in all AHA Programs. Horses enrolled in AHA programs must be registered with the Arabian Horse Association or the Canadian Arabian Horse Registry. Refer to the current AWP A Terms and Conditions for specific rules, regulations and deadlines.

Please note; You will have to fill out a Mid Summer National Championships Entry form and pay all their fees to compete in these classes

PLEASE PRINT CLEARLY IN INK - ONE HORSE PER FORM  
DO NOT MAIL THIS FORM TO AHA WITH YOUR ENTRIES

Mail Nominations To:

AWPA, Michele Reser 6150 Bennett Lawson Rd., Mansfield, TX 76063. email.arabianwesternpleasure1@gmail.com

### HORSE INFORMATION:

Name: \_\_\_\_\_

Registration #: \_\_\_\_\_

Sire: \_\_\_\_\_ Dam: \_\_\_\_\_

\_\_\_ \$15,000 (Minimum) AWP A The Arabian Horse Times Western Pleasure AAO TR Maturity for 4/5 Year Olds

\_\_\_ \$15,000 (Minimum) AWP A Equine Athlete HA/AA Western Pleasure AAO TR Maturity for 4/5 Year Olds - DNA Testing required

If clothing is to be given what size: \_\_\_\_\_

### REGISTERED OWNER INFORMATION:

Name: \_\_\_\_\_ SS or Tax ID Number \_\_\_\_\_

Address: \_\_\_\_\_ ZIP \_\_\_\_\_

E-Mail Address: \_\_\_\_\_ Home#: \_\_\_\_\_ Work# \_\_\_\_\_ Fax \_\_\_\_\_

Prior to any class pay-out the Registered Owner is responsible to provide the following forms to the AWP A.

US Residents - IRS Form W-9 and Non-US Residents - IRS Form W-8BEN

### TRAINER INFORMATION:

Name: \_\_\_\_\_

Address: \_\_\_\_\_

E-Mail Address: \_\_\_\_\_ Home#: \_\_\_\_\_ Work# \_\_\_\_\_ Fax \_\_\_\_\_

In making this application, I hereby subject myself to and agree to be bound by all the provisions of the Articles of Incorporation, By Laws, Rules and Regulations of the Arabian Horse Association and the AWP A as they now exist or may from time to time be amended, knowledge of which I now have or will immediately acquire.

Signature: \_\_\_\_\_ Date: \_\_\_\_\_

Entries and Fees must be postmarked by US Nationals close of entries date and sent to the address below or incur post entry charges

\_\_\_\_\_ \$700.00. Non-refundable Due by the close of Original Canadian entries

\_\_\_\_\_ \$500.00 Post Entry Fee if applicable

\_\_\_\_\_ Total Due

### METHOD OF PAYMENT:

US Funds Check - payable to AWP A Check # \_\_\_\_\_ VISA \_\_\_\_\_ Master Card \_\_\_\_\_ AMX \_\_\_\_\_

Credit Card #: \_\_\_\_\_

Expiration Date: \_\_\_\_\_ Security Code: \_\_\_\_\_

Name on Card: \_\_\_\_\_

Billing Address: \_\_\_\_\_

**Congratulations Katharyn Hart,**

winner of this Handcrafted, Custom Made, Finely Detailed

**Ranch Pleasure Saddle**

on behalf of

**Nymeyer's at Tanglewood  
& Miguel Aguilar**

at the

**2020 Scottsdale Arabian  
Horse Show!**



**And a big Thank You to  
for donating it back**

**Katharyn  
to**

**Nymeyer's at Tanglewood with Miguel Aguilar  
to award it to one of the winners of the  
2020 Youth Nationals!**





# 2020 Youth and Mid Summer National Championship

## RV Reservation Form For VIP Lot Only (Behind Barn 9)

### ARRIVAL INFORMATION

Duration of the show (Nights of July 11-25) ..... **Total \$1050.00**

- VIP lot at the north end of Barn 9 close to all arenas and barns.
- Paved lot with full hook up including power (50 amp), sewer, and water
- Reservations will be accepted on first come first serve basis
- **100% non-refundable payment due at time of reservation**

**\*\*No arrivals prior to July 11<sup>th</sup> MUST vacate prior to noon on Sunday, July 26\*\***

### RESERVATION INFORMATION

Name \_\_\_\_\_ Stalled With/Trainer \_\_\_\_\_

\*Contact Phone \_\_\_\_\_ \*Contact Email \_\_\_\_\_  
(REQUIRED) (REQUIRED)

Vehicle Type:     RV     5<sup>th</sup> Wheel Camper/Horse Trailer     Bumper Pull Camper

RV Plate Number \_\_\_\_\_ RV Length \_\_\_\_\_

1<sup>st</sup> Choice Lot # \_\_\_\_\_ 2<sup>nd</sup> Choice Lot # \_\_\_\_\_ 3<sup>rd</sup> Choice Lot # \_\_\_\_\_

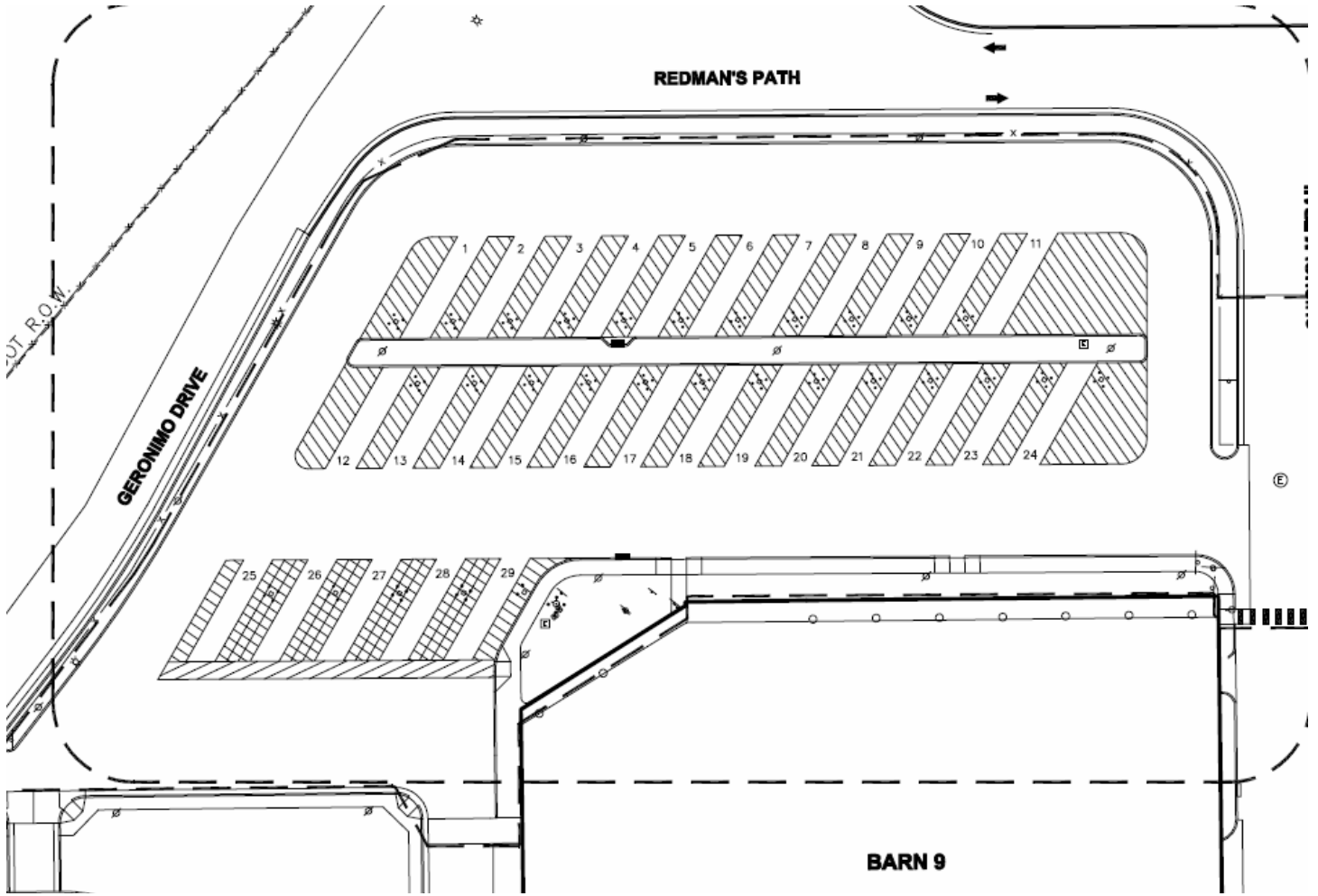
### METHOD OF PAYMENT

<b>Method Of Payment (US Funds Only)</b>			
“Effective June 1, 2019, a required 3% Convenience Fee will be added by AHA to payments made by Credit Card. A Convenience Fee charge does not apply if the customer submits payment by check or money order.”			
<input type="checkbox"/> Credit Card		<input type="checkbox"/> Check Enclosed	
Payable to AHA		Check # _____	
Credit Card# _____			\$ _____
Print Name as it appears on CC _____			
Exp Date _____	CVS _____	Signature _____	
Credit Card Billing Address (include zip) _____			

*[All other camper space outside of the VIP lot must be reserved directly with the Oklahoma State Fairgrounds.](#)*  
*[Please call the Office at \(405\) 948-6700 for details](#)*



# VIP RV LOT LAYOUT



This competition is recognized by USDF for 2020

**USDF Membership Benefits:** USDF is dedicated to education, the recognition of achievement, and promotion of dressage. For details on member benefits, including educational programs, awards, and other opportunities, refer to the *USDF Member Guide* or the USDF website at [www.usdf.org](http://www.usdf.org).

**Membership Requirements for USEF-licensed/USDF-recognized Competitions:** Owners and riders, including foreign riders and owners who are not residents of the US, wishing to participate in a USEF-licensed/USDF-recognized competition as a rider or owner/lessee, must have either a USDF Group Membership (GM), Participating Membership (PM), or have a USDF Non-Member (NM) Identification number and pay the USDF Non-Member (NM) fee. (Note: USDF Business Members can own horses but cannot compete as riders with their USDF Business Membership.)

Horses competing at USEF-licensed/USDF-recognized competitions must have either a USDF Horse Identification (HID) number or a USDF Lifetime Horse Registration (LHR). Proper credentials or verification certificates must be presented to the competition secretary.

Riders and owners wishing to participate in a USEF-licensed/USDF-recognized competition, and not able to present the competition secretary with verification of a USDF membership or NM identification, and USDF LHR or USDF HID, must complete a USDF Competition Affidavit Form and pay the \$5 affidavit filing fee. A copy of a completed affidavit form from another competition may also be used for verification purposes for up to 60 days. (Exception: Affidavits cannot be used at Great American Insurance Group/USDF Regional Dressage Championships.)

**Exceptions:**

- Horses competing only in Individual Breed Classes (IBCs) at DSHB competitions, sires and dams of horses in DSHB group classes, where those sires or dams are not actually competing in the same competition, horses competing only in breed restricted dressage or DSHB classes at Regular Competitions (e.g. all Arabian, all Friesian, or all Morgan classes), or in USDF Introductory Level tests, pas de deux or quadrille, are exempt from this requirement. Also exempt are horses ridden in leadline, exhibitions, games and races, classes for 4-H members, walk-trot academy, and opportunity classes.
- Riders and owners/lessees competing only in classes which are exempt from the USDF HID requirements are also exempt from the USDF NM identification number and NM fee requirements. Also exempt are handlers of horses competing in DSHB In-Hand or Group classes.

**Memberships Defined**

**Participating Membership (PM):** A membership issued to an individual directly by USDF. The membership year is December 1 through November 30. PMs are available for 1 year (\$90), 5 years (\$360), or life (\$1,800). A USDF Youth Participating Membership (YPM) is available for individuals who have not reached their 21<sup>st</sup> birthday by December 1 of the current membership year (\$72). A PM allows the member to compete at USEF-licensed/USDF-recognized competitions and to participate as a rider and/or owner/lessee for all Adequan/USDF Year-End Awards and the Great American Insurance Group/USDF Regional Dressage Championship program.

**Group Membership (GM):** A membership issued to an individual by USDF when the member name and dues are submitted to USDF through an affiliate Group Member Organization (GMO). The GM year begins December 1 and ends November 30. A GM allows the member to compete at USEF-licensed/USDF-recognized competitions and participate in the USDF Rider Awards program.

**Business Membership (BM):** A membership that runs December 1 through November 30 and is issued to a business or organization directly by USDF. The USDF BM (\$240) offers a wider variety of advertising benefits. BMs satisfy requirements of horse ownership only.

**Non-Member (NM) Identification Number:** For each USDF NM owner/lessee and USDF NM rider there will be a USDF NM fee of \$35 per competition that must be collected by the show secretary and submitted to USDF along with the USDF Report of Fees document and the \$5 affidavit fee and Competition Affidavit Form if the person cannot provide a copy of their USDF NM card. Owners/lessees or riders exempt from the NM number requirements are also exempt from paying the USDF NM fee. If there are multiple owners of a horse and all are NMs, only one of the owners must pay the NM fee. If the horse has at least one owner who is a current USDF PM, GM, or BM there is no NM fee assessed. Competition management will be invoiced for any USDF membership USDF NM fees not received with the USDF post-competition paperwork, along with a report listing all USDF NMs. Competition management is then required to submit the NM fees within 30 days to the USDF. An individual with a USDF NM identification number is not eligible for any USDF membership benefits. Once a USDF NM number has been assigned, a USDF NM card can be obtained from the USDF website.

**Horse Identification (HID) Number:** A one-time tracking number for horses (\$35). Scores earned by a horse with an HID number will be recorded, but will NOT be counted towards Adequan/USDF Year-End Awards. A horse with an HID number is not eligible to compete in Great American Insurance Group/USDF Regional, qualifying or championship classes. An HID number can be upgraded to a Lifetime Horse Registration (LHR) for a fee of \$80. If a horse has a USDF LHR it does not need an HID number. An HID number is a one-time fee that does not need to be renewed.

**Lifetime Horse Registration (LHR):** A horse with an LHR (\$115) is eligible for Adequan/USDF Year-End Awards, and eligible to compete in Great American Insurance Group/USDF Regional, qualifying and championship classes, assuming requirements for the owner and rider are met. If a horse has an LHR it does not need an HID number. An LHR does not need to be renewed.

**How to Join USDF**

Applications for USDF Participating Membership (PM), Business Membership (BM), Horse Identification (HID) number, and Lifetime Horse Registration (LHR) may be found in the following locations:

- On the USDF website: [www.usdf.org](http://www.usdf.org). You can submit the application online or download the form and fax or mail it to the USDF office.
- In the show office at USEF-licensed/USDF-recognized competitions classified by USEF as Dressage Competitions, and Regular Competitions which are open to all breeds.
- By calling or writing the USDF office at (859) 971-2277, 4051 Iron Works Parkway, Lexington, KY 40511

The effective date of membership is the date the form and correct fees are received in the USDF office or, if applying at a competition, the date accepted by the competition secretary, provided the application is signed and dated by the competition secretary, member, and/or horse owner on that same day.

# STATE FAIR PARK ADVANCE BEDDING ORDER

(Revised: August 2019)

Name of Horse Show: \_\_\_\_\_



State Fair Park welcomes you to your Horse Show. In order for us to better serve your needs during the show, we at the Feed & Bedding Service, would like to encourage you to use this "Advance Bedding Order" for your convenience. IT IS IMPERATIVE THAT YOU FOLLOW THE INSTRUCTIONS ON THIS FORM SO WE MAY BETTER SERVE YOU DURING YOUR STAY WITH US.

EXHIBITOR NAME: \_\_\_\_\_ ARRIVAL DATE: \_\_\_\_\_

STABLE/TRAINER NAME: \_\_\_\_\_ APPROX TIME: \_\_\_\_\_ (AM) \_\_\_\_\_ (PM)

ADDRESS: \_\_\_\_\_ STATE FAIR PARK BARN #: \_\_\_\_\_

CITY & STATE: \_\_\_\_\_ ZIP: \_\_\_\_\_ STATE FAIR PARK STALL #: \_\_\_\_\_

PHONE: ( ) \_\_\_\_\_ CELL PHONE: ( ) \_\_\_\_\_

## . . . . . METHODS OF PAYMENT . . . . .

**A. CHECK:**

Please include the following information for the person signing the check: Date of Birth: \_\_\_\_\_

Driver's licence #: \_\_\_\_\_ Expiration Date: \_\_\_\_\_ State: \_\_\_\_\_

**B. CREDIT CARD: (WILL BE PROMPTLY PROCESSED)**

VISA     MASTERCARD     AMERICAN EXPRESS     DISCOVER

CARD #: \_\_\_\_\_ EXPIRATION DATE: \_\_\_\_\_

**C. OPEN ACCOUNT:**

IF YOU WANT TO OPEN A CHARGE ACCOUNT THAT WILL RUN THROUGH THE LAST DAY OF THE SHOW, YOU MUST ENCLOSE THE FOLLOWING:

- a. Your SIGNED blank check payable to "OKLAHOMA STATE FAIR"
- b. On your "FOR" line, you must print "OPEN ACCOUNT"
- c. You MUST FILL THE DRIVER'S LICENCE INFORMATION REQUESTED IN SECTION A, ABOVE

check will be retained in the Feed & Bedding office until the end of the show, unless you decide to close your account earlier. We are sorry that we CANNOT open a charge account by credit card, but at the end of the show, if you prefer, you may pay your account by cash or credit card. We will then return your check to you.

D. YOUR PAYMENT BY CHECK, CREDIT CARD OR "OPEN ACCOUNT CHECK", along with your information from A, B or C above, MUST be included to process your order.

E. A HANDLING AND MAILING FEE OF \$10 WILL BE CHARGED IF YOU DO NOT COME TO THE FEED & BEDDING OFFICE TO CLOSE YOUR ACCOUNT BEFORE YOU LEAVE THE SHOW. PRICES ARE SUBJECT TO CHANGE WITHOUT NOTICE.

STALL BEDDING:	QUANTITY:	PRICE:	TOTAL PRICE:
Pine Shavings-small particle (4-5 cu. ft.) _____	_____ Bags	@ \$ 8.00/bag	\$ _____
White Pine (CALL FOR CHOICES) _____	_____ Bags	CALL	\$ _____
Cedar Chips (5.5 cu. ft. compressed) _____	_____ Bags	@ \$10.50/bag	\$ _____
Pine Flakes (10 cu. ft. compressed) _____	_____ Bags	@ \$11.00/bag	\$ _____
Pine Pellets (40 lb. bag) _____	_____ Bags	@ \$8.00/bag	\$ _____
_____	_____	_____	_____
_____	_____	_____	_____

GRAND TOTAL    \$ \_\_\_\_\_

Please have my order in my stall. Put my name on the bedding.

I will take full responsibility for the security of same. Signature: \_\_\_\_\_

SEND TO:    STATE FAIR PARK FEED & BEDDING SERVICE    PHONE: 405.948.6786    FAX: 405.948.6787  
 P.O. BOX 74943, OKLAHOMA CITY, OK 73147    EMAIL: FEEDANDBEDDING@OKSTATEFAIR.COM

# Youth & Mid Summer Nationals

## OFFICIAL VENDORS

### CATERING

#### State Fair Park

Sarah Schoenhoff, Catering Sales Manager  
sschoenhoff@okstatefair.com

### DECORATOR

#### Midwest Decorating Company

1510 S. Memorial Drive, Tulsa, OK 74112  
918.584.0988

### FARRIER

TBA

### FEED/BEDDING

#### State Fair Park Feed & Bedding Service

PO Box 74943, Oklahoma City, OK 73147  
(405) 948-6786 or (405) 948-6787  
See order form in Omnibus

### FLORIST/PLANTS

#### Calvert's

5308 N. Classen Blvd., OKC, OK 73118  
(405) 848-6642

### GOLF CARTS

#### Metro Golf Cars

4063 South Fwy., Fort Worth, TX 76110  
www.metrogolfcars.com  
817.921.5491

### MEDICAL SERVICES

#### Equestrian Medical Service, LLC

5722 Ridge Rd NW, Piedmont, OK 73078  
(405) 373-2094

### PHOTOGRAPHER

#### Ferrara Photography

19458-B Soledad Cyn. Rd. Suite 493  
Santa Clarita, CA 91351  
www.ferraraphoto.com  
435.214.0443

### STALL MAT RENTAL

#### Rent A Stall Mat Co

orders@rentastallmat.com  
(844) 628-7787

### VETERINARIAN

#### Equine Athlete Veterinary Services

Dr. Brad Hill (517) 643-1091  
Dr. Ty Wallis (970) 218-4867

### WEB LIVE STREAMING

Arabian Horse Association  
www.arabianhorses.stream

## HOTELS

### BEST WESTERN

4300 Southwest Third Street  
Oklahoma City, OK 73108  
(405) 947-7000  
www.bwsaddleback.com/

### COURTYARD MARRIOTT AIRPORT

4301 Highline Boulevard  
Oklahoma City, OK 73108  
(405) 946-6500  
www.marriott.com

### DOUBLETREE BY HILTON

OKLAHOMA CITY AIRPORT  
4410 SW 19th Street  
Oklahoma City, OK 73108  
(405) 789-3600  
www.oklahomacityairport.doubletree.com

### EMBASSY SUITES OKC

WILL ROGERS AIRPORT  
1815 South Meridian Avenue  
Oklahoma City, OK 73108  
(405) 682-6000  
www.embassysuitesoklahomacity.com

### FAIRFIELD INN & SUITES OKC AIRPORT

4521 SW 15th Street  
Meridian & SW 15th Street  
Oklahoma City, OK 73128  
(405) 604-3223  
www.marriott.com/okcap

### HAMPTON INN & SUITES

4333 SW 15th Street  
Oklahoma City, OK 73108  
(405) 604-8000

### HILTON GARDEN INN OKC BRICKTOWN

328 E. Sheridan Ave.  
Oklahoma City, OK 73104  
(405) 270-0588  
www.hiltongardeninn3.hilton.com

### HILTON GARDEN INN AIRPORT

801 South Meridian Avenue  
Oklahoma City, OK 73108  
(405) 942-1400  
www.oklahomacityairport.hgi.com

### HOLIDAY INN

4401 SW 15th Street  
Oklahoma City, OK 73108  
405-601-7272

### HYATT PLACE AIRPORT

1818 South Meridian Road  
Oklahoma City, OK 73108  
(405) 682-3900  
www.oklahomacityairport.place.hyatt.com

### LAQUINTA INNS & SUITES

808 S. Meridian Ave.  
Oklahoma City, OK 73108  
(405) 702-7720  
www.laquintaoklahomacityairport.com

### TOWNPLACE SUITES MARRIOTT

4601 SW 15th Street  
Oklahoma City, OK 73128  
(405) 600-9988  
www.marriott.com/okcts

### TRU HILTON

802 S. Meridian Ave.  
Oklahoma City, OK 73108  
(405) 609-3955  
www.tru3.hilton.com

### WYNDHAM GARDEN OKC AIRPORT

2101 S. Meridian Ave.  
Oklahoma City, OK 73108  
(405) 685.4000  
www.wyndhamhotels.com

**Book early and mention you are with the Arabian Horse Association block**

**Visit our Event Page at arabianhorses.org to book online.**